

Opticin polyclonal antibody

Catalog: BS60333

Host: Rabbit

Reactivity: Human, Mouse, Rat

BackGround:

Opticin, also known as OPTC or OPT, is a 332 amino acid protein that is secreted into the extracellular matrix and contains seven LRR repeats. Expressed in skin and fetal liver and also present in ocular tissues, such as the retina, cornea and iris, opticin functions to bind collagen fibrils and, via this interaction, is thought to regulate fibril spacing, morphology and organization. Opticin is subject to post-translational O-glycosylation and may be associated with the pathogenesis of primary open angle glaucoma.

Product:

Rabbit IgG, 1mg/ml in PBS with 0.02% sodium azide, 50% glycerol, pH7.2

Molecular Weight:

~ 40 kDa

Swiss-Prot:

Q9UBM4

Purification&Purity:

The antibody was affinity-purified from rabbit antiserum by affinity-chromatography using epitope-specific immunogen and the purity is > 95% (by SDS-PAGE).

Applications:

WB: 1:500~1:1000

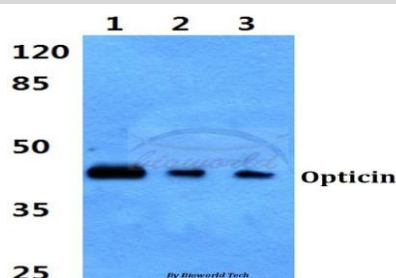
Storage&Stability:

Store at 4 °C short term. Aliquot and store at -20 °C long term. Avoid freeze-thaw cycles.

Specificity:

Opticin polyclonal antibody detects endogenous levels of Opticin protein.

DATA:



Western blot (WB) analysis of Opticin polyclonal antibody at 1:500 dilution

Lane1:Hela cell lysate

Lane2:Mouse heart tissue lysate

Lane3:Rat heart tissue lysate

Note:

For research use only, not for use in diagnostic procedure.

Bioworld Technology, Inc.

Add: 1660 South Highway 100, Suite 500 St. Louis Park, MN 55416, USA.

Email: info@bioworld.com

Tel: 6123263284

Fax: 6122933841

Bioworld technology, co. Ltd.

Add: No 9, weidi road Qixia District Nanjing, 210046, P. R. China.

Email: info@biogot.com

Tel: 0086-025-68037686

Fax: 0086-025-68035151