

CREG1 polyclonal antibody

Catalog: BS60342

Host: Rabbit

Reactivity: Rat, Mouse

BackGround:

May contribute to the transcriptional control of cell growth and differentiation. Antagonizes transcriptional activation and cellular transformation by the adenovirus E1A protein. The transcriptional control activity of cell growth requires interaction with IGF2R.

Product:

Rabbit IgG, 1mg/ml in PBS with 0.02% sodium azide, 50% glycerol, pH7.2.

Molecular Weight:

~ 30 kDa

Swiss-Prot:

O75629

Purification&Purity:

The antibody was affinity-purified from rabbit antiserum by affinity-chromatography using epitope-specific immunogen and the purity is > 95% (by SDS-PAGE).

Applications:

WB: 1:1000~1:2000

Storage&Stability:

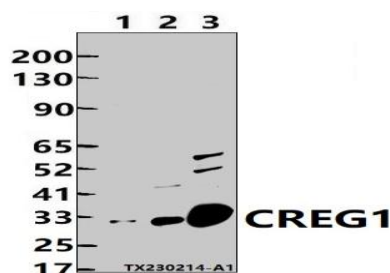
Store at 4 °C short term. Aliquot and store at -20 °C long

term. Avoid freeze-thaw cycles.

Specificity:

CREG1 polyclonal antibody detects endogenous levels of CREG1 protein.

DATA:



Western blot (WB) analysis of CREG1 polyclonal antibody at 1:1000 dilution

Lane1:PC12 whole cell lysate(30ug)

Lane2:The Kidney tissue lysate of Mouse(30ug)

Lane3:The Kidney tissue lysate of Rat(30ug)

Note:

For research use only, not for use in diagnostic procedure.

Bioworld Technology, Inc.

Add: 1660 South Highway 100, Suite 500 St. Louis Park, MN 55416, USA.

Email: info@bioworld.com

Tel: 6123263284

Fax: 6122933841

Bioworld technology, co. Ltd.

Add: No 9, weidi road Qixia District Nanjing, 210046, P. R. China.

Email: info@biogot.com

Tel: 0086-025-68037686

Fax: 0086-025-68035151