

## GPR81 polyclonal antibody

Catalog: BS60353

Host: Rabbit

Reactivity: Human, Mouse, Rat

### BackGround:

G protein-coupled receptor 81 (FKSG80) belongs to the G protein-coupled receptor 1 family. It is an integral membrane protein which functions as an orphan receptor. The gene encoding the FKSG80 protein, GPR81, maps to chromosome 12q24.31 in humans. The FKSG80 protein is a 347 amino acid protein that shares 70% homology to the chemokine receptor HM74. FKSG80 is expressed mainly in pituitary, but can also be detected in adipose tissue. It is not found in hippocampus, basal forebrain, frontal, temporal and occipital lobes of the cortex, caudate nucleus or nucleus accumbens.

### Product:

Rabbit IgG, 1mg/ml in PBS with 0.02% sodium azide, 50% glycerol, pH7.2

### Molecular Weight:

~ 40 kDa

### Swiss-Prot:

Q9BXC0

### Purification&Purity:

The antibody was affinity-purified from rabbit antiserum by affinity-chromatography using epitope-specific immunogen and the purity is > 95% (by SDS-PAGE).

### Applications:

WB: 1:500~1:1000

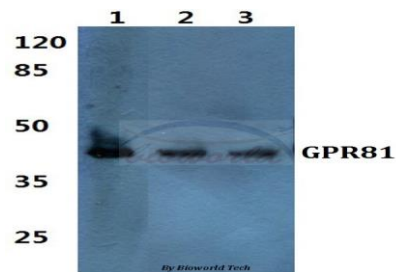
### Storage&Stability:

Store at 4 °C short term. Aliquot and store at -20 °C long term. Avoid freeze-thaw cycles.

### Specificity:

GPR81 polyclonal antibody detects endogenous levels of GPR81 protein.

### DATA:



Western blot (WB) analysis of GPR81 polyclonal antibody at 1:500 dilution

Lane1:HEK293T cell lysate

Lane2:Raw264.7 cell lysate

Lane3:PC12 cell lysate

### Note:

For research use only, not for use in diagnostic procedure.

### Bioworld Technology, Inc.

Add: 1660 South Highway 100, Suite 500 St. Louis Park, MN 55416, USA.

Email: [info@bioworld.com](mailto:info@bioworld.com)

Tel: 6123263284

Fax: 6122933841

### Bioworld technology, co. Ltd.

Add: No 9, weidi road Qixia District Nanjing, 210046, P. R. China.

Email: [info@biogot.com](mailto:info@biogot.com)

Tel: 0086-025-68037686

Fax: 0086-025-68035151