

## Na<sup>+</sup> CP type VIII $\alpha$ polyclonal antibody

Catalog: BS60365

Host: Rabbit

Reactivity: Human, Mouse, Rat

### BackGround:

The sodium channel protein type 8 subunit alpha (Na<sup>+</sup> CP type VIII $\alpha$ ) is a multi-pass, transmembrane protein that mediates the sodium ion permeability of excitable membranes. The three glycoproteins that comprise the voltage-gated sodium channel proteins include a pore-forming  $\alpha$  subunit, a noncovalently associated  $\beta$ 1 subunit and a disulfide-linked  $\beta$ 2 subunit. The two  $\beta$  subunits regulate the level of channel expression, modulate gating and function as cell adhesion molecules for cellular aggregation and cytoskeleton interaction. The  $\alpha$  subunits of sodium channels type I and III are predominantly expressed in neuronal cell bodies and proximal processes, while type II $\alpha$  subunits are more abundant along axons. Sodium channels are important for rapid signal transduction but also play a significant role in neuronal development. Defects of the SCN8A gene have exhibited detrimental effects on the growth of secondary motoneurons. Loss of SCN8A expression will result in progressive paralysis and early death.

### Product:

Rabbit IgG, 1mg/ml in PBS with 0.02% sodium azide, 50% glycerol, pH7.2

### Molecular Weight:

~ 225 kDa

### Swiss-Prot:

Q9UQD0

### Purification&Purity:

The antibody was affinity-purified from rabbit antiserum by affinity-chromatography using epitope-specific im-

munogen and the purity is > 95% (by SDS-PAGE).

### Applications:

WB: 1:500~1:1000

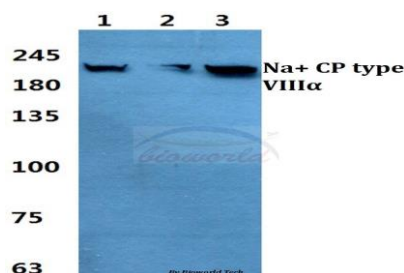
### Storage&Stability:

Store at 4 °C short term. Aliquot and store at -20 °C long term. Avoid freeze-thaw cycles.

### Specificity:

Na<sup>+</sup> CP type VIII $\alpha$  polyclonal antibody detects endogenous levels of Na<sup>+</sup> CP type VIII $\alpha$  protein.

### DATA:



Western blot (WB) analysis of Na<sup>+</sup> CP type VIII $\alpha$  polyclonal antibody at 1:500 dilution

Lane1:MCF-7 cell lysate

Lane2:Raw264.7 cell lysate

Lane3:H9C2 cell lysate

### Note:

For research use only, not for use in diagnostic procedure.

### Bioworld Technology, Inc.

Add: 1660 South Highway 100, Suite 500 St. Louis Park, MN 55416, USA.

Email: [info@bioworld.com](mailto:info@bioworld.com)

Tel: 6123263284

Fax: 6122933841

### Bioworld technology, co. Ltd.

Add: No 9, weidi road Qixia District Nanjing, 210046, P. R. China.

Email: [info@biogot.com](mailto:info@biogot.com)

Tel: 0086-025-68037686

Fax: 0086-025-68035151