

## Inhibin $\beta$ -A polyclonal antibody

Catalog: BS60379

Host: Rabbit

Reactivity: Human, Mouse, Rat

### Background:

The TGF $\beta$  superfamily is composed of numerous growth and differentiation factors, including transforming growth factor  $\beta$  (TGF $\beta$ ) 1, 2 and 3; growth/differentiation factor (GDF) 1 through 8; Mullerian inhibiting substance (MIS); bone morphogenic protein (BMP) 2 through 8; glial cell line-derived neurotrophic factor (GDNF); Inhibins ( $\alpha$ ,  $\beta$ -A,  $\beta$ -B and  $\beta$ -C), Lefty and Nodal. Members of the TGF $\beta$  superfamily are involved in embryonic development and adult tissue homeostasis. Inhibins and activins inhibit and activate, respectively, the secretion of follitropin by the pituitary gland. Inhibins and activins are involved in regulating a number of functions such as hypothalamic and pituitary hormone secretion, gonadal hormone secretion, germ cell development and maturation, erythroid differentiation, Insulin secretion, nerve cell survival, embryonic axial development or bone growth, depending on their subunit composition. Activins oppose the functions of Inhibins. Inhibins are predominantly expressed in liver, uterus and ovary tissue. Inhibin A, a dimer of  $\alpha$  and  $\beta$ -A, and Inhibin B, a dimer of  $\alpha$  and  $\beta$ -B, have been shown to inhibit the secretion of follicle stimulating hormone. Inhibin  $\beta$ -C forms a homodimer and its expression is predominant in adult liver.

### Product:

Rabbit IgG, 1mg/ml in PBS with 0.02% sodium azide, 50% glycerol, pH7.2

### Molecular Weight:

~ 52 kDa

### Swiss-Prot:

P08476

### Purification&Purity:

The antibody was affinity-purified from rabbit antiserum by affinity-chromatography using epitope-specific immunogen and the purity is > 95% (by SDS-PAGE).

### Applications:

WB: 1:500~1:1000

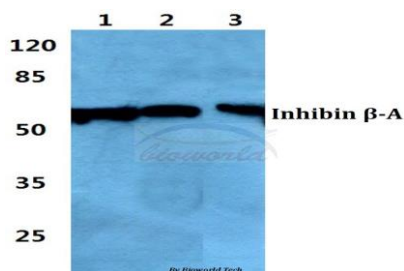
### Storage&Stability:

Store at 4 °C short term. Aliquot and store at -20 °C long term. Avoid freeze-thaw cycles.

### Specificity:

Inhibin  $\beta$ -A polyclonal antibody detects endogenous levels of Inhibin  $\beta$ -A protein.

### DATA:



Western blot (WB) analysis of Inhibin  $\beta$ -A polyclonal antibody at 1:500 dilution

Lane1:HEK293T cell lysate

Lane2:sp2/0 cell lysate

Lane3:H9C2 cell lysate

### Note:

For research use only, not for use in diagnostic procedure.

### Bioworld Technology, Inc.

Add: 1660 South Highway 100, Suite 500 St. Louis Park, MN 55416, USA.

Email: [info@bioworld.com](mailto:info@bioworld.com)

Tel: 6123263284

Fax: 6122933841

### Bioworld technology, co. Ltd.

Add: No 9, weidi road Qixia District Nanjing, 210046, P. R. China.

Email: [info@biogot.com](mailto:info@biogot.com)

Tel: 0086-025-68037686

Fax: 0086-025-68035151