

NPPC polyclonal antibody

Catalog: BS60381

Host: Rabbit

Reactivity: Human, Mouse, Rat

BackGround:

Natriuretic peptides comprise a family of 3 structurally related molecules: atrial natriuretic peptide (ANP), brain natriuretic peptide (BNP), and C-type natriuretic peptide (CNP). ANP and BNP act mainly as cardiac hormones, produced primarily by the atrium and ventricle, respectively, while the gene encoding C-type natriuretic peptide is expressed mainly in the brain. These peptides possess potent natriuretic, diuretic, and vasodilating activities and are implicated in body fluid homeostasis and blood pressure control. ANP, BNP, and CNP are highly homologous within the 17-residue ring structure formed by an intramolecular disulfide linkage. The genes which encode for ANP and BNP map to human chromosome 1p36.2. The gene which encodes for CNP maps to human chromosome 2q24-qter.

Product:

Rabbit IgG, 1mg/ml in PBS with 0.02% sodium azide, 50% glycerol, pH7.2

Molecular Weight:

~ 7 kDa

Swiss-Prot:

P23582

Purification&Purity:

The antibody was affinity-purified from rabbit antiserum by affinity-chromatography using epitope-specific immunogen and the purity is > 95% (by SDS-PAGE).

Applications:

WB: 1:500~1:1000

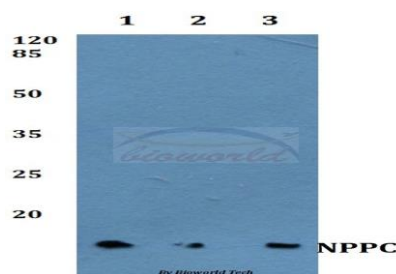
Storage&Stability:

Store at 4 °C short term. Aliquot and store at -20 °C long term. Avoid freeze-thaw cycles.

Specificity:

NPPC polyclonal antibody detects endogenous levels of NPPC protein.

DATA:



Western blot (WB) analysis of NPPC polyclonal antibody at 1:500 dilution

Lane1:HEK293T whole cell lysate

Lane2:Mouse heart tissue lysate

Lane3:Rat heart tissue lysate

Note:

For research use only, not for use in diagnostic procedure.

Bioworld Technology, Inc.

Add: 1660 South Highway 100, Suite 500 St. Louis Park, MN 55416, USA.

Email: info@bioworld.com

Tel: 6123263284

Fax: 6122933841

Bioworld technology, co. Ltd.

Add: No 9, weidi road Qixia District Nanjing, 210046, P. R. China.

Email: info@biogot.com

Tel: 0086-025-68037686

Fax: 0086-025-68035151