

## Filaggrin polyclonal antibody

Catalog: BS60392

Host: Rabbit

Reactivity: Human, Mouse, Rat

### Background:

Profilaggrin is a large, insoluble, highly phosphorylated precursor protein and major component of keratohyalin granules in the living cells of the epidermis. During terminal differentiation of the epidermis, profilaggrin is proteolytically processed into active Filaggrin molecules that promote aggregation and disulfide-bond formation of keratin intermediate filaments. Active Filaggrin is present at a level of the epidermis where keratinocytes are in transition between the live nucleated granular layer and the anucleate cornified layer, suggesting that Filaggrin aids in the terminal differentiation process by facilitating apoptotic machinery. Filaggrin 2, also known as FLG2, Ifapsoriasis or IFPS (intermediate filament-associated and psoriasis-susceptibility protein), is a 2,391 amino acid protein that shares common structural features with Filaggrin. Filaggrin 2 contains ten Filaggrin repeats, two EF-hand domains and belongs to both the S-100 and S100-fused protein families.

### Product:

Rabbit IgG, 1mg/ml in PBS with 0.02% sodium azide, 50% glycerol, pH7.2

### Molecular Weight:

~ 92 kDa

### Swiss-Prot:

P20930

### Purification&Purity:

The antibody was affinity-purified from rabbit antiserum by affinity-chromatography using epitope-specific im-

munogen and the purity is > 95% (by SDS-PAGE).

### Applications:

WB: 1:500~1:1000

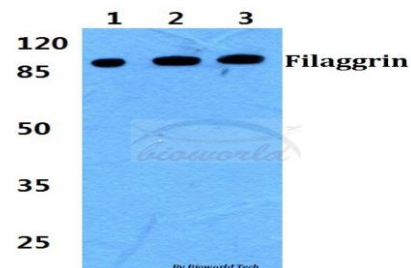
### Storage&Stability:

Store at 4 °C short term. Aliquot and store at -20 °C long term. Avoid freeze-thaw cycles.

### Specificity:

Filaggrin polyclonal antibody detects endogenous levels of Filaggrin protein.

### DATA:



Western blot (WB) analysis of Filaggrin polyclonal antibody at 1:500 dilution

Lane1:Hela cell lysate

Lane2:sp2/0 cell lysate

Lane3:PC12 cell lysate

### Note:

For research use only, not for use in diagnostic procedure.

### Bioworld Technology, Inc.

Add: 1660 South Highway 100, Suite 500 St. Louis Park, MN 55416, USA.

Email: [info@bioworld.com](mailto:info@bioworld.com)

Tel: 6123263284

Fax: 6122933841

### Bioworld technology, co. Ltd.

Add: No 9, weidi road Qixia District Nanjing, 210046, P. R. China.

Email: [info@biogot.com](mailto:info@biogot.com)

Tel: 0086-025-68037686

Fax: 0086-025-68035151