

## Mitofilin polyclonal antibody

Catalog: BS60403

Host: Rabbit

Reactivity: Human, Mouse, Rat

### BackGround:

Cristae are highly folded inner mitochondrial membrane compartments that are studded with cytochromes and ATP synthase proteins and function to provide a large surface area upon which cellular respiration can occur. Mitofilin, also known as IMMT, HMP, PIG4 or P87/89, is a 758 amino acid inner mitochondrial membrane protein that is preferentially expressed in heart tissue. Existing as three alternatively spliced isoforms, Mitofilin functions to control mitochondrial cristae morphology, including the formation and organization of cristae junctions and normal tubular cristae. Due to its role in mediating cristae structure and function, Mitofilin is essential for normal mitochondrial function and is, thus, critical to overall cell survival.

### Product:

Rabbit IgG, 1mg/ml in PBS with 0.02% sodium azide, 50% glycerol, pH7.2

### Molecular Weight:

~ 84 kDa

### Swiss-Prot:

Q16891

### Purification&Purity:

The antibody was affinity-purified from rabbit antiserum by affinity-chromatography using epitope-specific immunogen and the purity is > 95% (by SDS-PAGE).

### Applications:

WB: 1:500~1:1000

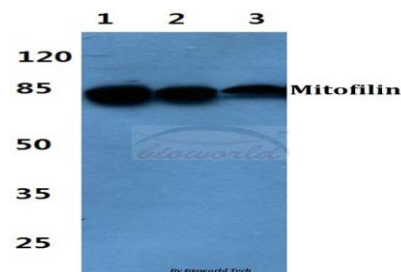
### Storage&Stability:

Store at 4 °C short term. Aliquot and store at -20 °C long term. Avoid freeze-thaw cycles.

### Specificity:

Mitofilin polyclonal antibody detects endogenous levels of Mitofilin protein.

### DATA:



Western blot (WB) analysis of Mitofilin polyclonal antibody at 1:500 dilution

Lane1:MCF-7 cell lysate

Lane2:sp2/0 cell lysate

Lane3:PC12 cell lysate

### Note:

For research use only, not for use in diagnostic procedure.

### Bioworld Technology, Inc.

Add: 1660 South Highway 100, Suite 500 St. Louis Park, MN 55416, USA.

Email: [info@bioworld.com](mailto:info@bioworld.com)

Tel: 6123263284

Fax: 6122933841

### Bioworld technology, co. Ltd.

Add: No 9, weidi road Qixia District Nanjing, 210046, P. R. China.

Email: [info@biogot.com](mailto:info@biogot.com)

Tel: 0086-025-68037686

Fax: 0086-025-68035151