

## LHB polyclonal antibody

Catalog: BS60414

Host: Rabbit

Reactivity: Human, Mouse, Rat

### BackGround:

Various hormones are secreted from the anterior pituitary gland during development and growth. Lutropin, also called luteinizing hormone (LH), plays a role in spermatogenesis and ovulation by stimulating the testis and ovaries to produce steroids. LH, like many of the anterior pituitary hormones, consists of heterodimers formed from a common alpha chain and a unique beta chain. Lutropin exists in a variety of isoforms, as the hormone is proteolytically processed and metabolized throughout circulation. LH modulates the processing of amyloid-beta precursor protein and amyloid-beta deposition. Pituitary exit of LH and FSH occur via different secretion pathways, and are released spatially from the pituitary via different circulatory routes.

### Product:

Rabbit IgG, 1mg/ml in PBS with 0.02% sodium azide, 50% glycerol, pH7.2

### Molecular Weight:

~ 15 kDa

### Swiss-Prot:

P01229

### Purification&Purity:

The antibody was affinity-purified from rabbit antiserum by affinity-chromatography using epitope-specific immunogen and the purity is > 95% (by SDS-PAGE).

### Applications:

WB: 1:500~1:1000

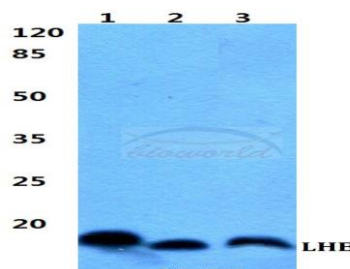
### Storage&Stability:

Store at 4 °C short term. Aliquot and store at -20 °C long term. Avoid freeze-thaw cycles.

### Specificity:

LHB polyclonal antibody detects endogenous levels of LHB protein.

### DATA:



Western blot (WB) analysis of LHB polyclonal antibody at 1:500 dilution

Lane1:HEK293T cell lysate

Lane2:sp2/0 cell lysate

Lane3:PC12 cell lysate

### Note:

For research use only, not for use in diagnostic procedure.

### Bioworld Technology, Inc.

Add: 1660 South Highway 100, Suite 500 St. Louis Park, MN 55416, USA.

Email: [info@bioworld.com](mailto:info@bioworld.com)

Tel: 6123263284

Fax: 6122933841

### Bioworld technology, co. Ltd.

Add: No 9, weidi road Qixia District Nanjing, 210046, P. R. China.

Email: [info@biogot.com](mailto:info@biogot.com)

Tel: 0086-025-68037686

Fax: 0086-025-68035151