

TSG101 polyclonal antibody

Catalog: BS6042

Host: Rabbit

Reactivity: Human, Mouse, Rat

BackGround:

The transformation of a normal cell to one that is malignant can result from mutations in genes that encode proteins with key regulatory functions. Examples include the retinoblastoma gene product (Rb p110), p53, VHL and APC. Using a novel cloning strategy that allows the isolation of previously uncharacterized genes encoding selectable recessive phenotypes, an additional tumor suppressor gene has been identified. This gene, termed *tsG101* for tumor susceptibility gene 101, encodes a stathmin binding domain protein. When expression of this growth inhibitory gene is blocked in NIH/3T3 cells using anti-sense mRNA, the cells exhibit a transformed phenotype and are tumorigenic in SL6 mice.

Product:

Rabbit IgG, 1mg/ml in PBS with 0.02% sodium azide, 50% glycerol, pH7.2

Molecular Weight:

~ 48 kDa

Swiss-Prot:

Q99816

Purification&Purity:

The antibody was affinity-purified from rabbit antiserum by affinity-chromatography using epitope-specific immunogen and the purity is > 95% (by SDS-PAGE).

Applications:

WB 1:500 - 1:2000
IHC 1:50 - 1:200
IF 1:50 - 1:200

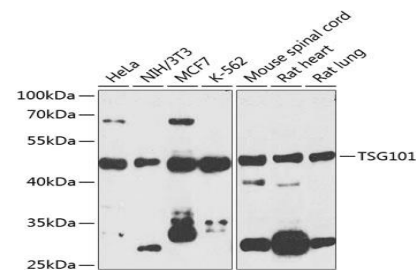
Storage&Stability:

Store at 4 °C short term. Aliquot and store at -20 °C long term. Avoid freeze-thaw cycles.

Specificity:

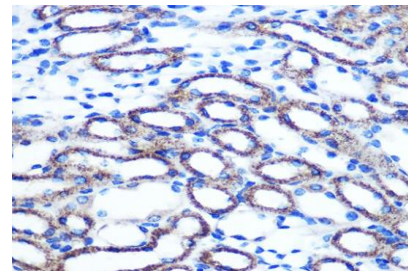
A synthetic peptide corresponding to a sequence within amino acids 300 to the C-terminus of human TSG101

DATA:

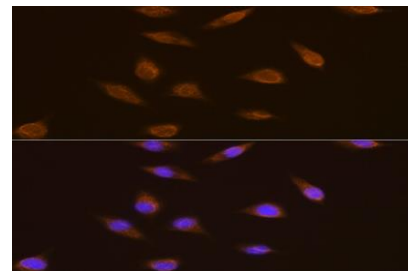


Western blot analysis of extracts of various cell lines, using TSG101 antibody at 1:1000 dilution.

Lysates/proteins: 25ug per lane.



Immunohistochemistry of paraffin-embedded Mouse kidney using TSG101 antibody at dilution of 1:100 (40x lens)



Immunofluorescence analysis of L929 cells using TSG101 antibody at dilution of 1:100. Blue: DAPI for nuclear staining.

Immunoprecipitation analysis of 150ug extracts of HeLa cells using 3ug TSG101 antibody. Western blot was performed from the immunoprecipitate using TSG101 antibody at a dilution of 1:1000.

Note:

For research use only, not for use in diagnostic procedure.

Bioworld Technology, Inc.

Add: 1660 South Highway 100, Suite 500 St. Louis Park, MN 55416, USA.

Email: info@bioworld.com

Tel: 6123263284

Fax: 6122933841

Bioworld technology, co. Ltd.

Add: No 9, weidi road Qixia District Nanjing, 210046, P. R. China.

Email: info@biogot.com

Tel: 0086-025-68037686

Fax: 0086-025-68035151