

ENDO G polyclonal antibody

Catalog: BS60425

Host: Rabbit

Reactivity: Human, Mouse, Rat

BackGround:

Endonuclease G (ENDO G), a nuclear encoded protein, localizes to the mitochondria (1). This sugar-nonspecific nuclease, responsible for major mitochondrial nuclease activity, preferentially cleaves single-stranded DNA(ssDNA). Synthesized as a propeptide with an amino-terminal presequence that targets the nuclease to mitochondria, ENDO G translocates to nuclei on apoptotic stimulation and act as a nuclease without sequence specificity. Both exonucleases and DNase I stimulate the ability of ENDO G to generate double-stranded DNA cleavage products at physiological ionic strengths, suggesting that these activities work in concert with ENDO G in apoptotic cells to ensure efficient DNA breakdown.

Product:

Rabbit IgG, 1mg/ml in PBS with 0.02% sodium azide, 50% glycerol, pH7.2

Molecular Weight:

~ 35 kDa

Swiss-Prot:

Q14249

Purification&Purity:

The antibody was affinity-purified from rabbit antiserum by affinity-chromatography using epitope-specific immunogen and the purity is > 95% (by SDS-PAGE).

Applications:

WB: 1:500~1:1000

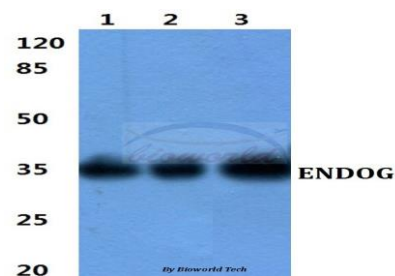
Storage&Stability:

Store at 4 °C short term. Aliquot and store at -20 °C long term. Avoid freeze-thaw cycles.

Specificity:

ENDO G polyclonal antibody detects endogenous levels of ENDO G protein.

DATA:



Western blot (WB) analysis of ENDO G polyclonal antibody at 1:500 dilution

Lane1:HepG2 cell lysate

Lane2:Raw264.7 cell lysate

Lane3:PC12 cell lysate

Note:

For research use only, not for use in diagnostic procedure.

Bioworld Technology, Inc.

Add: 1660 South Highway 100, Suite 500 St. Louis Park, MN 55416, USA.

Email: info@bioworld.com

Tel: 6123263284

Fax: 6122933841

Bioworld technology, co. Ltd.

Add: No 9, weidi road Qixia District Nanjing, 210046, P. R. China.

Email: info@biogol.com

Tel: 0086-025-68037686

Fax: 0086-025-68035151