

FHL2 polyclonal antibody

Catalog: BS60427

Host: Rabbit

Reactivity: Human, Mouse, Rat

Background:

Specific combinations of FHL proteins elicit selective activation of both CREB and CREM. Skeletal and cardiac muscle express FHL-1 in high levels as compared to the low level of expression in smooth muscle of the colon, small intestine and prostate. FHL-1 localizes to the cytosol of myoblasts, myotubes, and differentiated myocytes. FHL-2 is also located in cardiac and skeletal muscle, as well as in placenta and ovary tissues. FHL-3 is found in skeletal muscle, but absent in cardiac muscle. FHL-4 is expressed exclusively by the seminiferous epithelium of the testis, which suggests that FHL-4 is involved in spermatogenesis. The genetic loci for FHLs vary considerably despite similar amino acid sequences among the FHL group.

Product:

Rabbit IgG, 1mg/ml in PBS with 0.02% sodium azide, 50% glycerol, pH7.2

Molecular Weight:

~ 32 kDa

Swiss-Prot:

Q14192

Purification&Purity:

The antibody was affinity-purified from rabbit antiserum by affinity-chromatography using epitope-specific immunogen and the purity is > 95% (by SDS-PAGE).

Applications:

WB: 1:500~1:1000

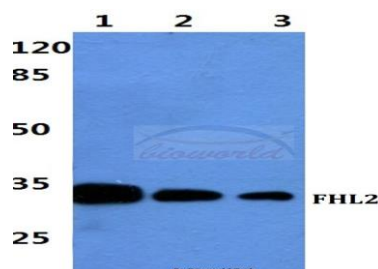
Storage&Stability:

Store at 4 °C short term. Aliquot and store at -20 °C long term. Avoid freeze-thaw cycles.

Specificity:

FHL2 polyclonal antibody detects endogenous levels of FHL2 protein.

DATA:



Western blot (WB) analysis of FHL2 polyclonal antibody at 1:500 dilution

Lane1:Hela cell lysate

Lane2:sp2/0 cell lysate

Lane3:H9C2 cell lysate

Note:

For research use only, not for use in diagnostic procedure.

Bioworld Technology, Inc.

Add: 1660 South Highway 100, Suite 500 St. Louis Park, MN 55416, USA.

Email: info@bioworld.com

Tel: 6123263284

Fax: 6122933841

Bioworld technology, co. Ltd.

Add: No 9, weidi road Qixia District Nanjing, 210046, P. R. China.

Email: info@biogot.com

Tel: 0086-025-68037686

Fax: 0086-025-68035151