

GSTM1 polyclonal antibody

Catalog: BS60428

Host: Rabbit

Reactivity: Human,Rat

BackGround:

Members of the glutathione S-transferase (GST) family of proteins function in the detoxification of xenobiotics to protect cells against toxicant-induced damage. GSTs are differentially expressed in lung, liver and kidney tissue and, notably, three isoforms (GSTA1-1, GSTA1-4 and GSTM1) localize to the mitochondria in addition to the cytoplasm. In normal and transformed cells, the oncoprotein Myb transcriptionally upregulates GSTM1. This isoform shows high specific activity for Aflatoxin B1 epoxide conjugation, suggesting an important role for this interaction in the defense against both chemical and oxidative stress.

Product:

Rabbit IgG, 1mg/ml in PBS with 0.02% sodium azide, 50% glycerol, pH7.2

Molecular Weight:

~ 26 kDa

Swiss-Prot:

P09488

Purification&Purity:

The antibody was affinity-purified from rabbit antiserum by affinity-chromatography using epitope-specific immunogen and the purity is > 95% (by SDS-PAGE).

Applications:

WB: 1:500~1:1000

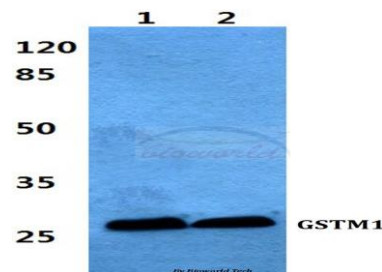
Storage&Stability:

Store at 4 °C short term. Aliquot and store at -20 °C long term. Avoid freeze-thaw cycles.

Specificity:

GSTM1 polyclonal antibody detects endogenous levels of GSTM1 protein.

DATA:



Western blot (WB) analysis of GSTM1 polyclonal antibody at 1:500 dilution

Lane1:HepG2 cell lysate

Lane2:Rat testis tissue lysate

Note:

For research use only, not for use in diagnostic procedure.

Bioworld Technology, Inc.

Add: 1660 South Highway 100, Suite 500 St. Louis Park, MN 55416, USA.

Email: info@bioworld.com

Tel: 6123263284

Fax: 6122933841

Bioworld technology, co. Ltd.

Add: No 9, weidi road Qixia District Nanjing, 210046, P. R. China.

Email: info@biogot.com

Tel: 0086-025-68037686

Fax: 0086-025-68035151