

SEMA3E polyclonal antibody

Catalog: BS60460

Host: Rabbit

Reactivity: Human, Mouse, Rat

BackGround:

Semaphorins are a family of cell surface and secreted proteins involved in neural development that are conserved from insects to humans. Members of this family are approximately 750 amino acids in length (including signal sequences) and are defined by a conserved extracellular "semaphorin" domain of approximately 500 amino acids containing 14-16 cysteines, blocks of conserved sequences and no obvious repeats. SEMA3E is a secreted semaphorin with 775 amino acids. Mutations in the SEMA3E gene are associated with CHARGE syndrome, a disorder characterized by cranial nerve dysfunction, coloboma of the eye, choanal atresia, inner and external ear abnormalities, cardiac anomalies, genitourinary abnormalities, and growth retardation.

Product:

Rabbit IgG, 1mg/ml in PBS with 0.02% sodium azide, 50% glycerol, pH7.2

Molecular Weight:

~ 89 kDa

Swiss-Prot:

O15041

Purification&Purity:

The antibody was affinity-purified from rabbit antiserum by affinity-chromatography using epitope-specific immunogen and the purity is > 95% (by SDS-PAGE).

Applications:

WB: 1:500~1:1000

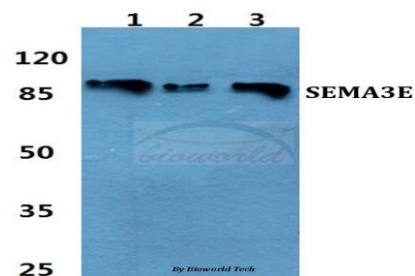
Storage&Stability:

Store at 4 °C short term. Aliquot and store at -20 °C long term. Avoid freeze-thaw cycles.

Specificity:

SEMA3E polyclonal antibody detects endogenous levels of SEMA3E protein.

DATA:



Western blot (WB) analysis of SEMA3E polyclonal antibody at 1:500 dilution

Lane1:A549 cell lysate

Lane2:Mouse liver tissue lysate

Lane3:Rat liver tissue lysate

Note:

For research use only, not for use in diagnostic procedure.

Bioworld Technology, Inc.

Add: 1660 South Highway 100, Suite 500 St. Louis Park, MN 55416, USA.

Email: info@bioworld.com

Tel: 6123263284

Fax: 6122933841

Bioworld technology, co. Ltd.

Add: No 9, weidi road Qixia District Nanjing, 210046, P. R. China.

Email: info@biogot.com

Tel: 0086-025-68037686

Fax: 0086-025-68035151