

SUPT4H1 polyclonal antibody

Catalog: BS60490

Host: Rabbit

Reactivity: Human, Mouse, Rat

BackGround:

SPT4 (also designated Suppressor of Ty4 and p14) and SPT5 (also designated DSIF p160) are highly conserved proteins from yeast to humans. Nuclear SPT4 and SPT5 are involved in both DRB (5,6-dichloro-1-beta-D-ribofuranosylbenzimidazole)-mediated transcriptional inhibition as well as the activation of transcriptional elongation by the HIV-1 protein Tat. SPT4 binds SPT5 to form the DSIF (DRB-sensitivity-inducing factor) complex, which binds RNA polymerase II and directly regulates elongation. However, SPT5 protein in mitotic HeLa cells migrates more slowly on SDS-PAGE than does SPT5 isolated from interphase cells, as a result of enhanced SPT5 phosphorylation. The C-terminal CTR1 domain of SPT5 is the substrate for P-TEFb phosphorylation, which is critical for SPT5 function as a regulator of transcriptional elongation.

Product:

Rabbit IgG, 1mg/ml in PBS with 0.02% sodium azide, 50% glycerol, pH7.2

Molecular Weight:

~ 13 kDa

Swiss-Prot:

P63272

Purification&Purity:

The antibody was affinity-purified from rabbit antiserum by affinity-chromatography using epitope-specific immunogen and the purity is > 95% (by SDS-PAGE).

Applications:

WB: 1:500~1:1000

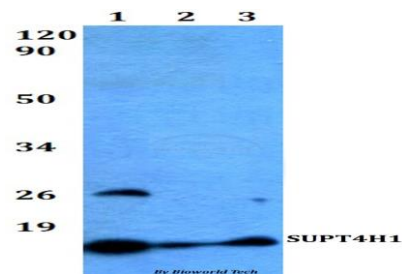
Storage&Stability:

Store at 4 °C short term. Aliquot and store at -20 °C long term. Avoid freeze-thaw cycles.

Specificity:

SUPT4H1 polyclonal antibody detects endogenous levels of SUPT4H1 protein.

DATA:



Western blot (WB) analysis of SUPT4H1 polyclonal antibody at 1:500 dilution

Lane1:Hela whole cell lysate

Lane2:sp2/0 whole cell lysate

Lane3:PC12 whole cell lysate

Note:

For research use only, not for use in diagnostic procedure.

Bioworld Technology, Inc.

Add: 1660 South Highway 100, Suite 500 St. Louis Park, MN 55416, USA.

Email: info@bioworld.com

Tel: 6123263284

Fax: 6122933841

Bioworld technology, co. Ltd.

Add: No 9, weidi road Qixia District Nanjing, 210046, P. R. China.

Email: info@biogot.com

Tel: 0086-025-68037686

Fax: 0086-025-68035151