

IGFL2 polyclonal antibody

Catalog: BS60493

Host: Rabbit

Reactivity: Human, Mouse, Rat

Background:

The insulin gene family, comprised of insulin, relaxin and insulin-like growth factors I and II (IGF-I and IGF-II), represents a group of structurally related polypeptides whose biological functions have diverged. The IGFs, or somato-medins, constitute a class of polypeptides that have a key role in pre-adolescent mammalian growth. IGF-I and -II are critical regulators of cell proliferation and differentiation. Most of the growth promoting properties of both ligands are mediated by the IGF-I receptor (IGF-IR). IGF-I and -II, respectively known as somatomedin C and somatomedin A, are single chain polypeptides which share an amino acid sequence homology of about 47% with insulin. IGF-I expression is regulated by growth hormone and mediates postnatal growth, while IGF-II is induced by placental lactogen during prenatal development. IGF-II is a fetal growth factor, influenced by placental lactogen and abundantly expressed by placental trophoblasts. IGF-II and IGF-binding protein 1 (IGFBP1) gene variants are associated with overfeeding-induced metabolic changes. The human IGF-II gene maps to chromosome 11p15.5, encoding a 180 amino acid protein which is the precursor to IGF-II.

Product:

Rabbit IgG, 1mg/ml in PBS with 0.02% sodium azide, 50% glycerol, pH7.2

Molecular Weight:

~ 13 kDa

Swiss-Prot:

Q6UWQ7

Purification&Purity:

The antibody was affinity-purified from rabbit antiserum by affinity-chromatography using epitope-specific immunogen and the purity is > 95% (by SDS-PAGE).

Applications:

WB: 1:500~1:1000

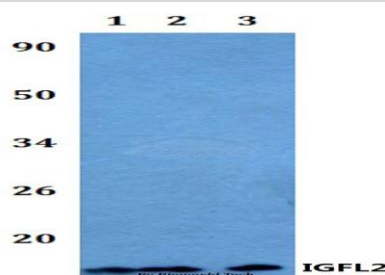
Storage&Stability:

Store at 4 °C short term. Aliquot and store at -20 °C long term. Avoid freeze-thaw cycles.

Specificity:

IGFL2 polyclonal antibody detects endogenous levels of IGFL2 protein.

DATA:



Western blot (WB) analysis of IGFL2 polyclonal antibody at 1:500 dilution

Lane1:NIH-3T3 whole cell lysate

Lane2:H9C2 whole cell lysate

Lane3:Jurkat whole cell lysate

Note:

For research use only, not for use in diagnostic procedure.

Bioworld Technology, Inc.

Add: 1660 South Highway 100, Suite 500 St. Louis Park, MN 55416, USA.

Email: info@bioworld.com

Tel: 6123263284

Fax: 6122933841

Bioworld technology, co. Ltd.

Add: No 9, weidi road Qixia District Nanjing, 210046, P. R. China.

Email: info@biogot.com

Tel: 0086-025-68037686

Fax: 0086-025-68035151