

SH2D1A polyclonal antibody

Catalog: BS60496

Host: Rabbit

Reactivity: Human, Mouse, Rat

Background:

SH2D1A, also SH2 domain protein 1A, SAP and CD150/SLAM (signaling lymphocyte activation molecule)-associated protein, influences signaling pathways involving SLAM molecules at the interface between T and B cells. SH2D1A modulates SLAM by blocking the recruitment of tyrosine phosphatase SHP2 to the phosphorylated cytoplasmic domain of SLAM. SLAM activation mediates expansion of activated T cells during immune responses, induces production of interferon- γ and changes the functional profile of subsets of T cells. SH2D1A is a hydrophilic, 128 amino acid protein that is 96% homologous to the mouse protein in both SH2 and tail domains. SH2D1A is present in all major subsets of T cells, including CD4+, CD45RO+, CD45RA+ and CD8+, but not in B cells. SH2D1A can interact via an SH2 domain with a motif (TIYXXV) present in the cytoplasmic tail of cell-surface receptors SLAM (CD150), CD84, CD229 (LY9) and CD244 (2B4).

Product:

Rabbit IgG, 1mg/ml in PBS with 0.02% sodium azide, 50% glycerol, pH7.2

Molecular Weight:

~ 14 kDa

Swiss-Prot:

O60880

Purification&Purity:

The antibody was affinity-purified from rabbit antiserum by affinity-chromatography using epitope-specific im-

munogen and the purity is > 95% (by SDS-PAGE).

Applications:

WB: 1:500~1:1000

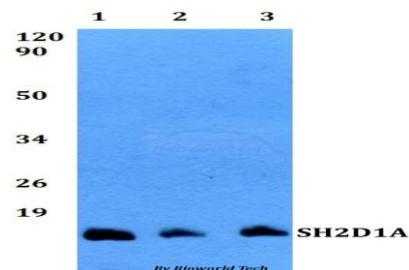
Storage&Stability:

Store at 4 °C short term. Aliquot and store at -20 °C long term. Avoid freeze-thaw cycles.

Specificity:

SH2D1A polyclonal antibody detects endogenous levels of SH2D1A protein.

DATA:



Western blot (WB) analysis of SH2D1A polyclonal antibody at 1:500 dilution

Lane1:HEK293T whole cell lysate

Lane2:Raw264.7 whole cell lysate

Lane3:PC12 whole cell lysate

Note:

For research use only, not for use in diagnostic procedure.

Bioworld Technology, Inc.

Add: 1660 South Highway 100, Suite 500 St. Louis Park, MN 55416, USA.

Email: info@bioworld.com

Tel: 6123263284

Fax: 6122933841

Bioworld technology, co. Ltd.

Add: No 9, weidi road Qixia District Nanjing, 210046, P. R. China.

Email: info@biogot.com

Tel: 0086-025-68037686

Fax: 0086-025-68035151