

FSHB polyclonal antibody

Catalog: BS60499

Host: Rabbit

Reactivity: Human, Mouse, Rat

BackGround:

Follicle-stimulating hormone (FSH), also called follitropin, belongs to the family of glycoprotein hormones that also includes luteinizing hormone and thyroid-stimulating hormone. These hormones are secreted by the pituitary and exist as heterodimers, consisting of a common α subunit and a homologous but distinct β subunit. While the α subunit of FSH is involved in the binding of FSH to the receptor (follicle-stimulating hormone receptor, also known as FSHR), the β subunit stabilizes this interaction. This heterodimer regulates a variety of processes, including secretion, posttranslational modification and signal transduction. Both FSH and FSHR are localized to Sertoli cells.

Product:

Rabbit IgG, 1mg/ml in PBS with 0.02% sodium azide, 50% glycerol, pH7.2

Molecular Weight:

~ 15 kDa

Swiss-Prot:

P01225

Purification&Purity:

The antibody was affinity-purified from rabbit antiserum by affinity-chromatography using epitope-specific immunogen and the purity is > 95% (by SDS-PAGE).

Applications:

WB: 1:500~1:1000

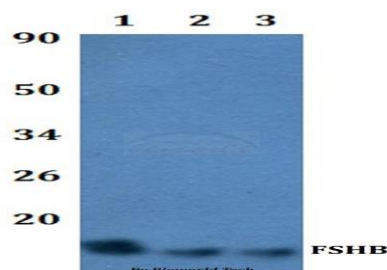
Storage&Stability:

Store at 4 °C short term. Aliquot and store at -20 °C long term. Avoid freeze-thaw cycles.

Specificity:

FSHB polyclonal antibody detects endogenous levels of FSHB protein.

DATA:



Western blot (WB) analysis of FSHB polyclonal antibody at 1:500 dilution

Lane1:Hela whole cell lysate

Lane2:Raw264.7 whole cell lysate

Lane3:PC12 whole cell lysate

Note:

For research use only, not for use in diagnostic procedure.

Bioworld Technology, Inc.

Add: 1660 South Highway 100, Suite 500 St. Louis Park, MN 55416, USA.

Email: info@bioworld.com

Tel: 6123263284

Fax: 6122933841

Bioworld technology, co. Ltd.

Add: No 9, weidi road Qixia District Nanjing, 210046, P. R. China.

Email: info@biogot.com

Tel: 0086-025-68037686

Fax: 0086-025-68035151