

MCFD2 polyclonal antibody

Catalog: BS60509

Host: Rabbit

Reactivity: Human,Rat

BackGround:

Multiple coagulation factor deficiency protein 2 (MCFD2) is localized in the endoplasmic reticulum-Golgi intermediate compartment (ERGIC) through a direct, calcium-dependent interaction with LMAN1. The MCFD2-LMAN1 complex forms a specific cargo receptor for the transport of selected proteins from the endoplasmic reticulum to the Golgi apparatus. Mutations in the MCFD2 gene may cause of factor V and factor VIII combined deficiency (F5F8D). F5F8D is an autosomal recessive human bleeding disorder characterized by the reduction of both clotting proteins.

Product:

Rabbit IgG, 1mg/ml in PBS with 0.02% sodium azide, 50% glycerol, pH7.2

Molecular Weight:

~ 16 kDa

Swiss-Prot:

Q8NI22

Purification&Purity:

The antibody was affinity-purified from rabbit antiserum by affinity-chromatography using epitope-specific immunogen and the purity is > 95% (by SDS-PAGE).

Applications:

WB: 1:500~1:1000

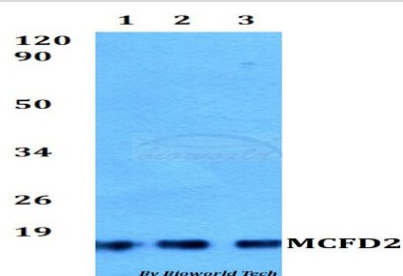
Storage&Stability:

Store at 4 °C short term. Aliquot and store at -20 °C long term. Avoid freeze-thaw cycles.

Specificity:

MCFD2 polyclonal antibody detects endogenous levels of MCFD2 protein.

DATA:



Western blot (WB) analysis of MCFD2 polyclonal antibody at 1:500 dilution

Lane1:HEK293T whole cell lysate

Lane2:A549 whole cell lysate

Lane3:PC12 whole cell lysate

Note:

For research use only, not for use in diagnostic procedure.

Bioworld Technology, Inc.

Add: 1660 South Highway 100, Suite 500 St. Louis Park, MN 55416, USA.

Email: info@bioworld.com

Tel: 6123263284

Fax: 6122933841

Bioworld technology, co. Ltd.

Add: No 9, weidi road Qixia District Nanjing, 210046, P. R. China.

Email: info@biogot.com

Tel: 0086-025-68037686

Fax: 0086-025-68035151