

## MRPL17 polyclonal antibody

Catalog: BS60524

Host: Rabbit

Reactivity: Human, Mouse

### BackGround:

Mitochondria have their own translation machinery for production of thirteen proteins that are required for oxidative phosphorylation. MRP-L17 (39S ribosomal protein L17, mitochondrial), also known as LIP2 (LYST-interacting protein 2), is a 175 amino acid protein that is a component of the large ribosomal subunit of the mitochondria. Expressed in adipose tissue, adrenal gland and mammary gland, MRP-L17 is one of the 70 protein components of mitochondrial ribosomes that are encoded by the nuclear genome. The gene encoding MRP-L17 maps to human chromosome 11, which houses over 1,400 genes and comprises nearly 4% of the human genome. Jervell and Lange-Nielsen syndrome, Jacobsen syndrome, Niemann-Pick disease, hereditary angioedema and Smith-Lemli-Opitz syndrome are associated with defects in genes that maps to chromosome 11.

### Product:

Rabbit IgG, 1mg/ml in PBS with 0.02% sodium azide, 50% glycerol, pH7.2

### Molecular Weight:

~ 20 kDa

### Swiss-Prot:

Q9NRX2

### Purification&Purity:

The antibody was affinity-purified from rabbit antiserum by affinity-chromatography using epitope-specific immunogen and the purity is > 95% (by SDS-PAGE).

### Applications:

WB: 1:500~1:1000

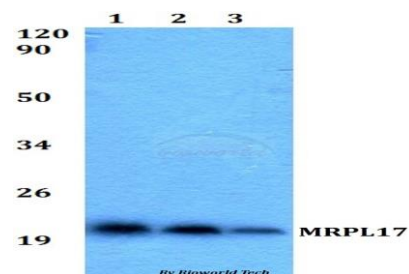
### Storage&Stability:

Store at 4 °C short term. Aliquot and store at -20 °C long term. Avoid freeze-thaw cycles.

### Specificity:

MRPL17 polyclonal antibody detects endogenous levels of MRPL17 protein.

### DATA:



Western blot (WB) analysis of MRPL17 polyclonal antibody at 1:500 dilution

Lane1:MCF-7 whole cell lysate

Lane2:Raw264.7 whole cell lysate

Lane3:Jurkat whole cell lysate

### Note:

For research use only, not for use in diagnostic procedure.

### Bioworld Technology, Inc.

Add: 1660 South Highway 100, Suite 500 St. Louis Park, MN 55416, USA.

Email: [info@bioworld.com](mailto:info@bioworld.com)

Tel: 6123263284

Fax: 6122933841

### Bioworld technology, co. Ltd.

Add: No 9, weidi road Qixia District Nanjing, 210046, P. R. China.

Email: [info@biogot.com](mailto:info@biogot.com)

Tel: 0086-025-68037686

Fax: 0086-025-68035151