

## IGF1 polyclonal antibody

Catalog: BS60538

Host: Rabbit

Reactivity: Human,Rat

### BackGround:

Insulin-like growth factor I, or IGF-I, is a ubiquitous peptide that acts in both an autocrine and paracrine fashion to stimulate the growth of vascular smooth muscle cells. In addition, IGF-I regulates renal function, growth and repair, is critically involved in bone formation and resorption and has been implicated in mediating aspects of the immune response. IGF function is modulated by at least six circulating IGF-binding proteins, designated IGFBP1-6, which associate with the soluble growth factor. While the function of IGF-II is less well understood, overexpression of the protein in mice suggests that IGF-II may play a regulatory role in insulin sensitivity and glucose uptake. Both IGF-I and IGF-II exert their biological effects through a common receptor, designated IGF-IR. Like the insulin receptor, IGF-IR is composed of two extracellular a chains and two signal transducing b chains cross-linked by disulfide bonds.

### Product:

Rabbit IgG, 1mg/ml in PBS with 0.02% sodium azide, 50% glycerol, pH7.2

### Molecular Weight:

~ 22 kDa

### Swiss-Prot:

P05019

### Purification&Purity:

The antibody was affinity-purified from rabbit antiserum by affinity-chromatography using epitope-specific im-

munogen and the purity is > 95% (by SDS-PAGE).

### Applications:

WB: 1:500~1:1000

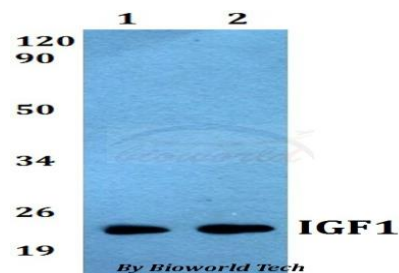
### Storage&Stability:

Store at 4 °C short term. Aliquot and store at -20 °C long term. Avoid freeze-thaw cycles.

### Specificity:

IGF1 polyclonal antibody detects endogenous levels of IGF1 protein.

### DATA:



Western blot (WB) analysis of IGF1 polyclonal antibody at 1:500 dilution

Lane1:HepG2 whole cell lysate

Lane2:PC12 whole cell lysate

### Note:

For research use only, not for use in diagnostic procedure.

### Bioworld Technology, Inc.

Add: 1660 South Highway 100, Suite 500 St. Louis Park, MN 55416, USA.

Email: [info@bioworld.com](mailto:info@bioworld.com)

Tel: 6123263284

Fax: 6122933841

### Bioworld technology, co. Ltd.

Add: No 9, weidi road Qixia District Nanjing, 210046, P. R. China.

Email: [info@biogot.com](mailto:info@biogot.com)

Tel: 0086-025-68037686

Fax: 0086-025-68035151