

TREM1 polyclonal antibody

Catalog: BS60555

Host: Rabbit

Reactivity: Human, Mouse, Rat

BackGround:

TREM-1 (triggering receptor expressed on myeloid cells-1) is expressed in monocytes and neutrophils but not in lymphocytes, dendritic cells, or other cell types. TREM-1 is a glycoprotein that is reduced by deglycosylation, in agreement with the predicted molecular mass. TREM-1 is an activating receptor of the Ig superfamily that is expressed on human myeloid cells, selectively expressed on blood neutrophils and a subset of monocytes, and is upregulated by bacterial LPS. Immunoblot analysis shows that TREM-1 is associated with DAP12, a molecule frequently associated with activating receptors. TREM-1 and the myeloid DAP12-associating lectin (MDL-1) are recently identified receptors which associate non-covalently with DAP12 to form receptor complexes that are involved in monocytic activation and inflammatory response.

Product:

Rabbit IgG, 1mg/ml in PBS with 0.02% sodium azide, 50% glycerol, pH7.2

Molecular Weight:

~ 26 kDa

Swiss-Prot:

Q9NP99

Purification&Purity:

The antibody was affinity-purified from rabbit antiserum by affinity-chromatography using epitope-specific immunogen and the purity is > 95% (by SDS-PAGE).

Applications:

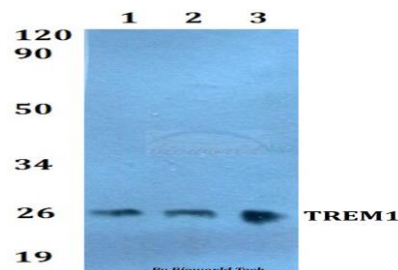
WB: 1:500~1:1000

Storage&Stability:

Store at 4 °C short term. Aliquot and store at -20 °C long term. Avoid freeze-thaw cycles.

Specificity:

TREM1 polyclonal antibody detects endogenous levels of TREM1 protein.

DATA:

Western blot (WB) analysis of TREM1 polyclonal antibody at 1:500 dilution

Lane1:HEK293T whole cell lysate

Lane2:sp2/0 whole cell lysate

Lane3:PC12 whole cell lysate

Note:

For research use only, not for use in diagnostic procedure.

Bioworld Technology, Inc.

Add: 1660 South Highway 100, Suite 500 St. Louis Park, MN 55416, USA.

Email: info@bioworld.com

Tel: 6123263284

Fax: 6122933841

Bioworld technology, co. Ltd.

Add: No 9, weidi road Qixia District Nanjing, 210046, P. R. China.

Email: info@biogot.com

Tel: 0086-025-68037686

Fax: 0086-025-68035151