

OR6N1 polyclonal antibody

Catalog: BS60581

Host: Rabbit

Reactivity: Human, Mouse, Rat

BackGround:

Olfactory receptors function by associating with odorant molecules to launch a neuronal response that elicits the perception of smell. Olfactory receptor genes are unevenly dispersed among 51 loci on 21 human chromosomes, and are composed of 172 subfamilies. OR6N1 (olfactory receptor, family 6, subfamily N, member 1), also known as olfactory receptor OR1-22, is a 312 amino acid multi-pass membrane protein belonging to the G-protein coupled receptor 1 family. As the largest family in the genome, the G-protein coupled receptor 1 family originated from single coding-exon genes. Encoded by a gene that maps to human chromosome 1q23.1, OR6N1 functions as an odorant receptor. Like many hormone and neurotransmitter receptors, OR6N1 shares a 7-transmembrane domain structure and recognizes G protein-mediated transduction of odorant signals.

Product:

Rabbit IgG, 1mg/ml in PBS with 0.02% sodium azide, 50% glycerol, pH7.2

Molecular Weight:

~ 35 kDa

Swiss-Prot:

Q8NGY5

Purification&Purity:

The antibody was affinity-purified from rabbit antiserum by affinity-chromatography using epitope-specific immunogen and the purity is > 95% (by SDS-PAGE).

Applications:

WB: 1:500~1:1000

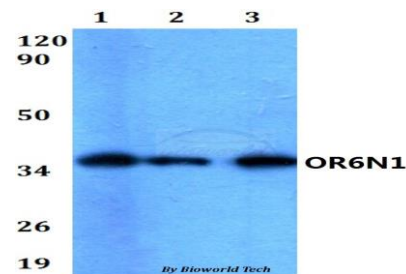
Storage&Stability:

Store at 4 °C short term. Aliquot and store at -20 °C long term. Avoid freeze-thaw cycles.

Specificity:

OR6N1 polyclonal antibody detects endogenous levels of OR6N1 protein.

DATA:



Western blot (WB) analysis of OR6N1 polyclonal antibody at 1:500 dilution

Lane1:HEK293T whole cell lysate

Lane2:Raw264.7 whole cell lysate

Lane3:H9C2 whole cell lysate

Note:

For research use only, not for use in diagnostic procedure.

Bioworld Technology, Inc.

Add: 1660 South Highway 100, Suite 500 St. Louis Park, MN 55416, USA.

Email: info@bioworld.com

Tel: 6123263284

Fax: 6122933841

Bioworld technology, co. Ltd.

Add: No 9, weidi road Qixia District Nanjing, 210046, P. R. China.

Email: info@biogot.com

Tel: 0086-025-68037686

Fax: 0086-025-68035151