

## PRSS8 polyclonal antibody

Catalog: BS60585

Host: Rabbit

Reactivity: Human, Mouse, Rat

### Background:

Prostasin, a serine protease first identified in prostate tissue, activates epithelial sodium channels in a variety of tissues. Though typically a membrane-anchored protein, free prostasin is also found in physiologic fluids and tissue culture media, indicating a mechanism for secretion from the cells as well. Aprotinin and other protease inhibitors suppress the channel-activating capacity of prostasin, while aldosterone increases prostasin expression and stimulates sodium uptake. In addition, DNA methylation negatively correlates with prostasin expression in cancer cells, while enforced reexpression decreases invasiveness as well as metastatic potential, implying that prostasin activity reflects epithelial cell physiology.

### Product:

Rabbit IgG, 1mg/ml in PBS with 0.02% sodium azide, 50% glycerol, pH7.2

### Molecular Weight:

~ 36 kDa

### Swiss-Prot:

Q16651

### Purification&Purity:

The antibody was affinity-purified from rabbit antiserum by affinity-chromatography using epitope-specific immunogen and the purity is > 95% (by SDS-PAGE).

### Applications:

WB: 1:500~1:1000

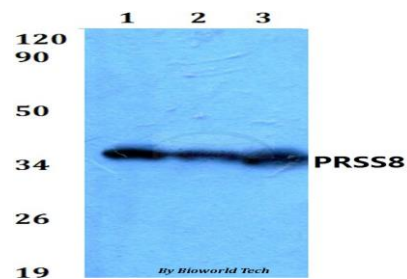
### Storage&Stability:

Store at 4 °C short term. Aliquot and store at -20 °C long term. Avoid freeze-thaw cycles.

### Specificity:

PRSS8 polyclonal antibody detects endogenous levels of PRSS8 protein.

### DATA:



Western blot (WB) analysis of PRSS8 polyclonal antibody at 1:500 dilution

Lane1:HEK293T whole cell lysate

Lane2:Raw264.7 whole cell lysate

Lane3:PC12 whole cell lysate

### Note:

For research use only, not for use in diagnostic procedure.

### Bioworld Technology, Inc.

Add: 1660 South Highway 100, Suite 500 St. Louis Park, MN 55416, USA.

Email: [info@bioworld.com](mailto:info@bioworld.com)

Tel: 6123263284

Fax: 6122933841

### Bioworld technology, co. Ltd.

Add: No 9, weidi road Qixia District Nanjing, 210046, P. R. China.

Email: [info@biogot.com](mailto:info@biogot.com)

Tel: 0086-025-68037686

Fax: 0086-025-68035151