

## CTSW polyclonal antibody

Catalog: BS60614

Host: Rabbit

Reactivity: Human, Mouse, Rat

### BackGround:

Cathepsin W (lymphopain) and cathepsin F comprise a novel subgroup of cathepsin proteases, and are phylogenetically distinct from other human cathepsins. The cathepsin W gene maps to chromosome 11q13.1 and contains ten exons with introns ranging from 81-119 bp. Cathepsin W protein is expressed specifically in CD8+ T lymphocytes. The expression of cathepsin W first occurs during the differentiation of thymocytes to CD8+ T lymphocytes, just as the thymocytes cease expression of CD4+ receptors. In transfected Cos-7 and HeLa cells, cathepsin W localizes within the rough endoplasmic reticulum. Cathepsin W contains a unique 21 amino acid peptide insertion between the active site histidine and asparagine residues, in addition to a distinctive 8-amino acid carboxy-terminal extension. An extended loop structure in the second or beta-sheet domain and an additional disulfide bond are two of several signature features of cathepsin W. Other features of cathepsin W include an additional cysteine, an S2 pocket and an additional residue. Cathepsin W may exist as a dimer with each monomer forming a disulfide bond.

### Product:

1 mg/ml in Phosphate buffered saline (PBS) with 15 mM sodium azide, approx. pH 7.2.

### Molecular Weight:

~ 42 kDa

### Swiss-Prot:

P56202

### Purification&Purity:

The antibody was affinity-purified from rabbit antiserum by affinity-chromatography using epitope-specific immunogen and the purity is > 95% (by SDS-PAGE).

### Applications:

WB: 1:500~1:1000

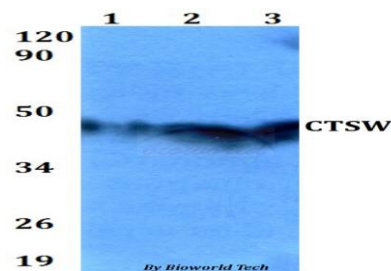
### Storage&Stability:

Store at 4 °C short term. Aliquot and store at -20 °C long term. Avoid freeze-thaw cycles.

### Specificity:

CTSW polyclonal antibody detects endogenous levels of CTSW protein.

### DATA:



Western blot (WB) analysis of CTSW polyclonal antibody at 1:500 dilution

Lane1:HEK293T whole cell lysate

Lane2:NIH-3T3 whole cell lysate

Lane3:PC12 whole cell lysate

### Note:

For research use only, not for use in diagnostic procedure.

### Bioworld Technology, Inc.

Add: 1660 South Highway 100, Suite 500 St. Louis Park, MN 55416, USA.

Email: [info@bioworld.com](mailto:info@bioworld.com)

Tel: 6123263284

Fax: 6122933841

### Bioworld technology, co. Ltd.

Add: No 9, weidi road Qixia District Nanjing, 210046, P. R. China.

Email: [info@biogot.com](mailto:info@biogot.com)

Tel: 0086-025-68037686

Fax: 0086-025-68035151