

KCNJ15 polyclonal antibody

Catalog: BS60622

Host: Rabbit

Reactivity: Human, Mouse, Rat

BackGround:

The KIR (inwardly rectifying potassium channel) family of potassium channels possess a greater tendency to allow potassium to flow into the cell rather than out of it. Kir4.1, also known as Kir1.2, is highly expressed in brain including glial cells, astrocytes and cortical neurons. Kir4.1 is also expressed in myelin-synthesizing oligodendrocytes and is crucial to myelination in the developing nervous system. The gene encoding human Kir4.1 maps to chromosome 1. Kir4.2, also known as Kir1.3, is expressed in kidney, lung, heart, thymus and thyroid during development. The gene encoding human Kir4.2 maps to chromosome 21 in the Down syndrome chromosome region 1, and Kir4.2 may play a role in the pathogenesis of Down's syndrome. Kir 5.1 forms functional channels only by coexpression with either Kir4.1 or Kir4.2 in the kidney and pancreas. The gene encoding human Kir5.1 maps to chromosome 17.

Product:

Rabbit IgG, 1mg/ml in PBS with 0.02% sodium azide, 50% glycerol, pH7.2

Molecular Weight:

~ 43 kDa

Swiss-Prot:

Q99712

Purification&Purity:

The antibody was affinity-purified from rabbit antiserum by affinity-chromatography using epitope-specific im-

munogen and the purity is > 95% (by SDS-PAGE).

Applications:

WB: 1:500~1:1000

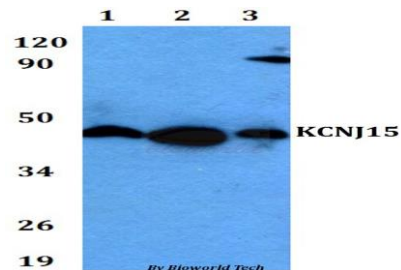
Storage&Stability:

Store at 4 °C short term. Aliquot and store at -20 °C long term. Avoid freeze-thaw cycles.

Specificity:

KCNJ15 polyclonal antibody detects endogenous levels of KCNJ15 protein.

DATA:



Western blot (WB) analysis of KCNJ15 polyclonal antibody at 1:500 dilution

Lane1:A549 whole cell lysate

Lane2:sp2/0 whole cell lysate

Lane3:PC12 whole cell lysate

Note:

For research use only, not for use in diagnostic procedure.

Bioworld Technology, Inc.

Add: 1660 South Highway 100, Suite 500 St. Louis Park, MN 55416, USA.

Email: info@bioworld.com

Tel: 6123263284

Fax: 6122933841

Bioworld technology, co. Ltd.

Add: No 9, weidi road Qixia District Nanjing, 210046, P. R. China.

Email: info@biogot.com

Tel: 0086-025-68037686

Fax: 0086-025-68035151