

## MFGE8 polyclonal antibody

Catalog: BS60623

Host: Rabbit

Reactivity: Human, Mouse, Rat

### Background:

Human milk-fat globule (MFG) is abundant in human breast milk and is composed of secreted lipids encapsulated by plasma membranes from the epithelial cells of mammary glands. MFG membranes are composed of various glycoproteins that serve as markers for differentiated carcinomas. MFG-E8 (Milk fat globule-EGF factor 8), also known as Lactadherin or BA46, is a 387 amino acid peripheral membrane protein that localizes to the membrane of a variety of tissues, including mammary epithelial surfaces, and contains one EGF-like domain and two F5/8 type C domains. Functioning as a specific ligand for Integrin  $\int 5$  and Integrin  $\int 3$ , MFG-E8 is thought to be involved in gamete interactions and cell attachment, possibly playing a role in fertilization and apoptosis. Additionally, MFG-E8 binds to rotavirus and inhibits its replication, thereby protecting the cell from viral infection. Overexpression of MFG-E8 is associated with breast cancer, suggesting that MFG-E8 may be related to tumorigenesis.

### Product:

1 mg/ml in Phosphate buffered saline (PBS) with 15 mM sodium azide, approx. pH 7.2.

### Molecular Weight:

~ 43 kDa

### Swiss-Prot:

Q08431

### Purification&Purity:

The antibody was affinity-purified from rabbit antiserum by affinity-chromatography using epitope-specific immunogen and the purity is > 95% (by SDS-PAGE).

### Applications:

WB: 1:500~1:1000

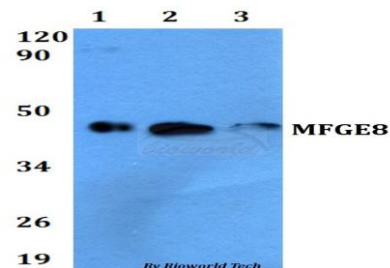
### Storage&Stability:

Store at 4 °C short term. Aliquot and store at -20 °C long term. Avoid freeze-thaw cycles.

### Specificity:

MFGE8 polyclonal antibody detects endogenous levels of MFGE8 protein.

### DATA:



Western blot (WB) analysis of MFGE8 polyclonal antibody at 1:500 dilution

Lane1:A549 whole cell lysate

Lane2:sp2/0 whole cell lysate

Lane3:PC12 whole cell lysate

### Note:

For research use only, not for use in diagnostic procedure.

### Bioworld Technology, Inc.

Add: 1660 South Highway 100, Suite 500 St. Louis Park, MN 55416, USA.

Email: [info@bioworld.com](mailto:info@bioworld.com)

Tel: 6123263284

Fax: 6122933841

### Bioworld technology, co. Ltd.

Add: No 9, weidi road Qixia District Nanjing, 210046, P. R. China.

Email: [info@biogot.com](mailto:info@biogot.com)

Tel: 0086-025-68037686

Fax: 0086-025-68035151