

## GPR143 polyclonal antibody

Catalog: BS60628

Host: Rabbit

Reactivity: Human, Mouse, Rat

### BackGround:

G protein-coupled receptors (GPRs or GPCRs), are members of the largest protein family and play a role in many different stimulus-response pathways. G-protein coupled receptors mediate extracellular signals into intracellular signals (G-protein activation). They respond to a great variety of signaling molecules, including hormones, neurotransmitters and other proteins and peptides. GPR143, also designated ocular albinism type 1 protein (OA1), is detected exclusively in pigment cells. OA1, which is a multi-pass membrane protein, is a melanosomal protein expressed primarily in pigment cells. Defects in the gene encoding for OA1 cause ocular albinism, an X-linked disorder mainly characterized by retinal hypopigmentation and visual impairment.

### Product:

Rabbit IgG, 1mg/ml in PBS with 0.02% sodium azide, 50% glycerol, pH7.2

### Molecular Weight:

~ 44 kDa

### Swiss-Prot:

P51810

### Purification&Purity:

The antibody was affinity-purified from rabbit antiserum by affinity-chromatography using epitope-specific immunogen and the purity is > 95% (by SDS-PAGE).

### Applications:

WB: 1:500~1:1000

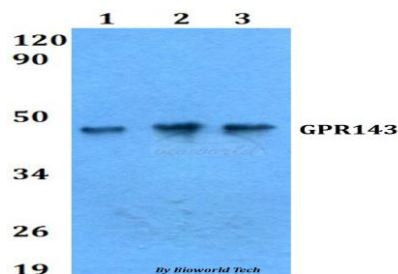
### Storage&Stability:

Store at 4 °C short term. Aliquot and store at -20 °C long term. Avoid freeze-thaw cycles.

### Specificity:

GPR143 polyclonal antibody detects endogenous levels of GPR143 protein.

### DATA:



Western blot (WB) analysis of GPR143 polyclonal antibody at 1:500 dilution

Lane1:A549 whole cell lysate

Lane2:sp2/0 whole cell lysate

Lane3:PC12 whole cell lysate

### Note:

For research use only, not for use in diagnostic procedure.

### Bioworld Technology, Inc.

Add: 1660 South Highway 100, Suite 500 St. Louis Park, MN 55416, USA.

Email: [info@bioworld.com](mailto:info@bioworld.com)

Tel: 6123263284

Fax: 6122933841

### Bioworld technology, co. Ltd.

Add: No 9, weidi road Qixia District Nanjing, 210046, P. R. China.

Email: [info@biogot.com](mailto:info@biogot.com)

Tel: 0086-025-68037686

Fax: 0086-025-68035151