

SERPINC1 polyclonal antibody

Catalog: BS60662

Host: Rabbit

Reactivity: Human, Mouse, Rat

BackGround:

The serine proteinase inhibitors (serpins) compose a superfamily of proteins with a diverse set of functions, including the control of blood coagulation, complement activation, programmed cell death and development. Serpins are secreted glycoproteins that contain a stretch of peptide that mimics a true substrate for a corresponding serine protease. Antithrombin III (ATIII), an extracellular plasma protein, is a crucial serine protease inhibitor that regulates the coagulation cascade in blood. The inhibitory activity of ATIII is amplified in the presence of heparin. ATIII inhibits Thrombin and Factors IXa, Xa and XIa. Defects in the gene SERPINC1, which encodes for ATIII, can cause ATIII deficiency, an autosomal dominant disease which is a risk factor for hereditary thrombophilia.

Product:

Rabbit IgG, 1mg/ml in PBS with 0.02% sodium azide, 50% glycerol, pH7.2

Molecular Weight:

~ 55 kDa

Swiss-Prot:

P01008

Purification&Purity:

The antibody was affinity-purified from rabbit antiserum by affinity-chromatography using epitope-specific immunogen and the purity is > 95% (by SDS-PAGE).

Applications:

WB: 1:500~1:1000

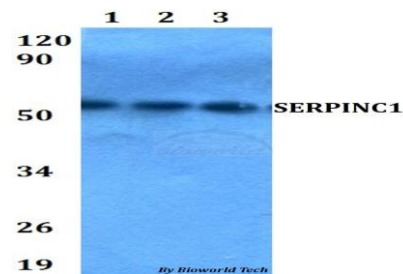
Storage&Stability:

Store at 4 °C short term. Aliquot and store at -20 °C long term. Avoid freeze-thaw cycles.

Specificity:

SERPINC1 polyclonal antibody detects endogenous levels of SERPINC1 protein.

DATA:



Western blot (WB) analysis of SERPINC1 polyclonal antibody at 1:500 dilution

Lane1:HEK293T whole cell lysate

Lane2:Raw264.7 whole cell lysate

Lane3:PC12 whole cell lysate

Note:

For research use only, not for use in diagnostic procedure.

Bioworld Technology, Inc.

Add: 1660 South Highway 100, Suite 500 St. Louis Park, MN 55416, USA.

Email: info@bioworld.com

Tel: 6123263284

Fax: 6122933841

Bioworld technology, co. Ltd.

Add: No 9, weidi road Qixia District Nanjing, 210046, P. R. China.

Email: info@biogot.com

Tel: 0086-025-68037686

Fax: 0086-025-68035151