

MMP21 polyclonal antibody

Catalog: BS60692

Host: Rabbit

Reactivity: Human

BackGround:

The matrix metalloproteinases (MMPs) are a family of peptidase enzymes responsible for the degradation of extracellular matrix components, including collagen, gelatin, fibronectin, laminin and proteoglycan. Transcription of MMP genes is differentially activated by phorbol ester, lipopolysaccharide (LPS) or staphylococcal enterotoxin B (SEB). MMP catalysis requires both calcium and zinc. MMP-21 is 569 amino acid residues in length and consists of a prodomain, catalytic domain, and haemopexin-like domain. It is the human orthologue for XMMP in *X. laevis* and CyMMP in *C. pyrrhogaster*. MMP-21 is expressed in various fetal and adult tissues. It is a possible target gene of the Wnt pathway, and the expression of this protein is controlled by Pax and Notch transcription factors. MMP-21 may play an important role in embryogenesis, tissue development (particularly in the brain), tumor progression and possibly apoptosis.

Product:

Rabbit IgG, 1mg/ml in PBS with 0.02% sodium azide, 50% glycerol, pH7.2

Molecular Weight:

~ 65 kDa

Swiss-Prot:

Q8N119

Purification&Purity:

The antibody was affinity-purified from rabbit antiserum by affinity-chromatography using epitope-specific immunogen and the purity is > 95% (by SDS-PAGE).

Applications:

WB: 1:500~1:1000

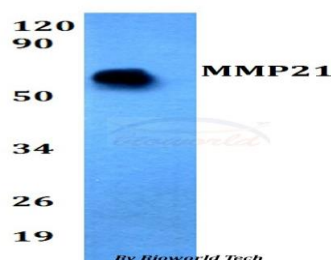
Storage&Stability:

Store at 4 °C short term. Aliquot and store at -20 °C long term. Avoid freeze-thaw cycles.

Specificity:

MMP21 polyclonal antibody detects endogenous levels of MMP21 protein.

DATA:



Western blot (WB) analysis of MMP21 polyclonal antibody at 1:500 dilution

Lane1:HEK293T whole cell lysate

Note:

For research use only, not for use in diagnostic procedure.

Bioworld Technology, Inc.

Add: 1660 South Highway 100, Suite 500 St. Louis Park, MN 55416, USA.

Email: info@bioworld.com

Tel: 6123263284

Fax: 6122933841

Bioworld technology, co. Ltd.

Add: No 9, weidi road Qixia District Nanjing, 210046, P. R. China.

Email: info@biogot.com

Tel: 0086-025-68037686

Fax: 0086-025-68035151