

PARK2 polyclonal antibody

Catalog: BS6071

Host: Rabbit

Reactivity: Human, Mouse, Rat

Background:

Parkin is a zinc-finger protein that is related to ubiquitin at the amino terminus. The wildtype Parkin gene, which maps to human chromosome 6q25.2-27, encodes a 465 amino acid full-length protein that is expressed as multiple isoforms ranging from 50-58 kDa. Mutations in the Parkin gene are responsible for autosomal recessive juvenile Parkinson's disease and commonly involve deletions of exons 3-5. In humans, Parkin is expressed in a subset of cells of the basal ganglia, midbrain, cerebellum and cerebral cortex, and is subject to alternative splicing in different tissues.

Product:

Rabbit IgG, 1mg/ml in PBS with 0.02% sodium azide, 50% glycerol, pH7.2

Molecular Weight:

~ 52 kDa

Swiss-Prot:

O60260

Purification&Purity:

The antibody was affinity-purified from rabbit antiserum by affinity-chromatography using epitope-specific immunogen and the purity is > 95% (by SDS-PAGE).

Applications:

WB: 1:500~1:2000

IF: 1:50~1:200

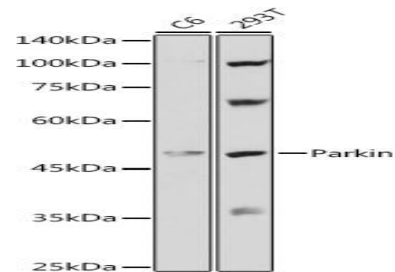
Storage&Stability:

Store at 4 °C short term. Aliquot and store at -20 °C long term. Avoid freeze-thaw cycles.

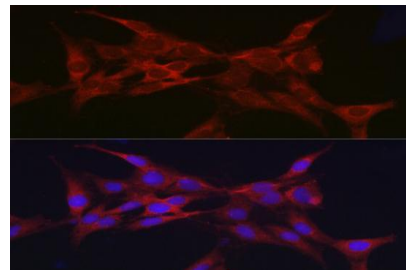
Specificity:

PARK2 polyclonal antibody detects endogenous levels of PARK2 protein.

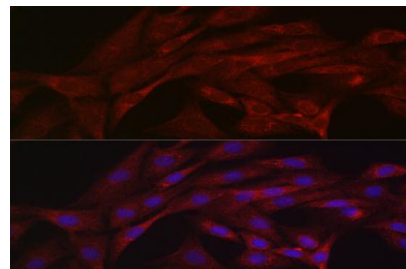
DATA:



Western blot analysis of extracts of various cell lines, using PARK2 antibody at 1:1000 dilution.



Immunofluorescence analysis of C6 cells using PARK2 Rabbit pAb at dilution of 1:50 (40x lens).



Immunofluorescence analysis of NIH/3T3 cells using PARK2 Rabbit pAb at dilution of 1:50 (40x lens).

Note:

For research use only, not for use in diagnostic procedure.

Bioworld Technology, Inc.

Add: 1660 South Highway 100, Suite 500 St. Louis Park, MN 55416, USA.

Email: info@bioworld.com

Tel: 6123263284

Fax: 6122933841

Bioworld technology, co. Ltd.

Add: No 9, weidi road Qixia District Nanjing, 210046, P. R. China.

Email: info@biogot.com

Tel: 0086-025-68037686

Fax: 0086-025-68035151