

ADAM8 polyclonal antibody

Catalog: BS60722

Host: Rabbit

Reactivity: Human, Mouse, Rat

Background:

ADAM (a disintegrin and metalloprotease) proteins are a family of over 30 membrane-anchored, glycosylated, Zn²⁺ dependent proteases that are involved in cell-cell, cell-matrix interface related processes including fertilization, muscle fusion, secretion of TNF and modulation of the neurogenic function of Notch and Delta. ADAM proteins possess a signal-domain, a pro-domain, a metalloprotease domain, a disintegrin domain (Integrin ligand), a cysteine-rich region, an epidermal growth factor-like domain, a transmembrane domain and a cytoplasmic tail. ADAMs are expressed in brain, testis, epididymis, ovary, breast, placenta, liver, heart, lung, bone and muscle, and catalyze proteolysis, adhesion, fusion, and intracellular signaling. ADAM 8 (CD156, MS2) is a 824 amino acid protein that contains a 16 amino acid signal peptide, a 637 amino acid extracellular region, a 25 amino acid transmembrane region and a 146 amino acid cytoplasmic region which possesses a cytoplasmic consensus Src homology 3 (SH3)-binding domain.

Product:

Rabbit IgG, 1mg/ml in PBS with 0.02% sodium azide, 50% glycerol, pH7.2

Molecular Weight:

~ 89 kDa

Swiss-Prot:

P78325

Purification&Purity:

The antibody was affinity-purified from rabbit antiserum by affinity-chromatography using epitope-specific immunogen and the purity is > 95% (by SDS-PAGE).

Applications:

WB: 1:500~1:1000

IHC: 1:50~1:200

Storage&Stability:

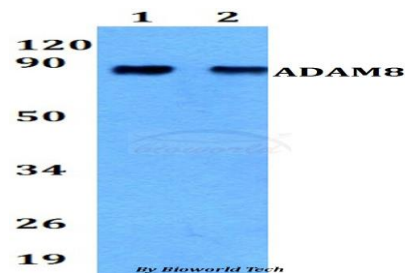
Store at 4 °C short term. Aliquot and store at -20 °C long

term. Avoid freeze-thaw cycles.

Specificity:

ADAM8 polyclonal antibody detects endogenous levels of ADAM8 protein.

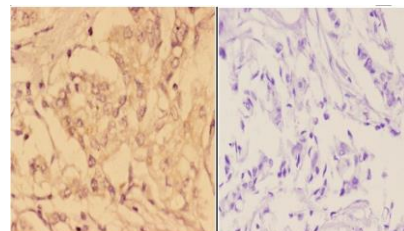
DATA:



Western blot (WB) analysis of ADAM8 polyclonal antibody at 1:500 dilution

Lane1:HEK293T whole cell lysate

Lane2:PC12 whole cell lysate



BS60722
Lot:CN45141

Immunohistochemistry (IHC) analyzes of ADAM8 pAb in paraffin-embedded human breast carcinoma tissue at 1:50, showing cytoplasm staining. Negative control (the right) Using PBS instead of primary antibody, secondary antibody is Goat Anti-Rabbit IgG-biotin followed by avidin-peroxidase.

Note:

For research use only, not for use in diagnostic procedure.

Bioworld Technology, Inc.

Add: 1660 South Highway 100, Suite 500 St. Louis Park, MN 55416, USA.

Email: info@bioworld.com

Tel: 6123263284

Fax: 6122933841

Bioworld technology, co. Ltd.

Add: No 9, weidi road Qixia District Nanjing, 210046, P. R. China.

Email: info@biogot.com

Tel: 0086-025-68037686

Fax: 0086-025-68035151



PRODUCT DATA SHEET

Bioworld Technology, Inc.

Bioworld Technology, Inc.

Add: 1660 South Highway 100, Suite 500 St. Louis Park,
MN 55416, USA.

Email: info@bioworld.com

Tel: 6123263284

Fax: 6122933841

Bioworld technology, co. Ltd.

Add: No 9, weidi road Qixia District Nanjing, 210046,
P. R. China.

Email: info@biogot.com

Tel: 0086-025-68037686

Fax: 0086-025-68035151