

GPRASP2 polyclonal antibody

Catalog: BS60733

Host: Rabbit

Reactivity: Human, Mouse, Rat

BackGround:

G protein-coupled receptors play a role in many different stimulus-response pathways. G protein-coupled receptors mediate extracellular signals into intracellular signals (G protein activation). They respond to a wide variety of signaling molecules, including hormones, neurotransmitters and other proteins and peptides. GASP-2 (G protein-coupled receptor associated sorting protein 2), also known as GPRASP2, is an 838 amino acid protein that regulates a number of G-protein coupled receptors, such as CT-R (calcitonin receptor) and mAChR M1 (muscarinic acetylcholine receptor M1), through interactions with their cytoplasmic tails. Expressed primarily in brain, GASP-2 is a member of the GPRASP family and forms a complex with Huntingtin, with which it is thought to influence receptor trafficking.

Product:

Rabbit IgG, 1mg/ml in PBS with 0.02% sodium azide, 50% glycerol, pH7.2

Molecular Weight:

~ 94 kDa

Swiss-Prot:

Q96D09

Purification&Purity:

The antibody was affinity-purified from rabbit antiserum by affinity-chromatography using epitope-specific immunogen and the purity is > 95% (by SDS-PAGE).

Applications:

WB: 1:500~1:1000

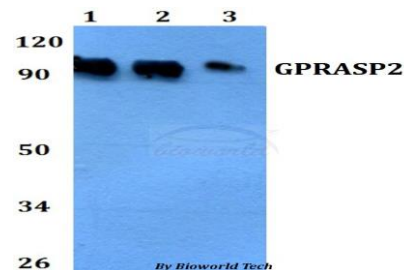
Storage&Stability:

Store at 4 °C short term. Aliquot and store at -20 °C long term. Avoid freeze-thaw cycles.

Specificity:

GPRASP2 polyclonal antibody detects endogenous levels of GPRASP2 protein.

DATA:



Western blot (WB) analysis of GPRASP2 polyclonal antibody at 1:500 dilution

Lane1:A549 whole cell lysate

Lane2:Raw264.7 whole cell lysate

Lane3:H9C2 whole cell lysate

Note:

For research use only, not for use in diagnostic procedure.

Bioworld Technology, Inc.

Add: 1660 South Highway 100, Suite 500 St. Louis Park, MN 55416, USA.

Email: info@bioworld.com

Tel: 6123263284

Fax: 6122933841

Bioworld technology, co. Ltd.

Add: No 9, weidi road Qixia District Nanjing, 210046, P. R. China.

Email: info@biogot.com

Tel: 0086-025-68037686

Fax: 0086-025-68035151