

## ITIH4 polyclonal antibody

Catalog: BS60746

Host: Rabbit

Reactivity: Human, Mouse, Rat

### BackGround:

The inter- $\alpha$ -trypsin inhibitor (ITI) family is a group of structurally related plasma serine protease inhibitors synthesized in the liver and built up from different combinations of three highly homologous heavy chains (ITI-H1, ITI-H2 and ITI-H3) and one light chain (Bikunin). Another member of the ITI family, ITI-H4, harbors a pro-line-rich region (PRR) in its C-terminus. ITI is a glycoprotein composed of three polypeptides linked by chondroitin sulphate: two heavy chains, ITI-H1 and ITI-H2, and Bikunin. Bikunin confers the protease-inhibitor function of ITI. The heavy chains of the ITI family, designated as SHAPs (for serum-derived hyaluronan-associated proteins), bind covalently to hyaluronic acid (HA), resulting in pericellular matrix stabilization. While the ITI family is primarily composed of multi-polypeptide molecules, ITI-H4 is a single chain molecule. Unlike other ITI family members, the gene transcriptions and products for rat and human ITI-H4 demonstrate marked differences, suggesting possible species-specific functions for ITI-H4. The gene encoding human ITI-H4 maps to chromosome 3p21.1.

### Product:

Rabbit IgG, 1mg/ml in PBS with 0.02% sodium azide, 50% glycerol, pH7.2

### Molecular Weight:

~ 103 kDa

### Swiss-Prot:

Q14624

### Purification&Purity:

The antibody was affinity-purified from rabbit antiserum by affinity-chromatography using epitope-specific immunogen and the purity is > 95% (by SDS-PAGE).

### Applications:

WB: 1:500~1:1000

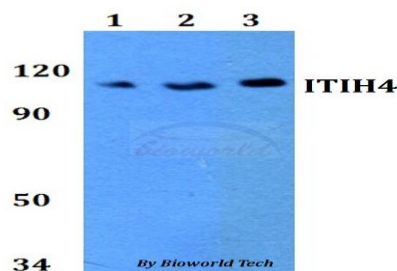
### Storage&Stability:

Store at 4 °C short term. Aliquot and store at -20 °C long term. Avoid freeze-thaw cycles.

### Specificity:

ITIH4 polyclonal antibody detects endogenous levels of ITIH4 protein.

### DATA:



Western blot (WB) analysis of ITIH4 polyclonal antibody at 1:500 dilution

Lane1:HEK293T whole cell lysate

Lane2:Raw264.7 whole cell lysate

Lane3:PC12 whole cell lysate

### Note:

For research use only, not for use in diagnostic procedure.

### Bioworld Technology, Inc.

Add: 1660 South Highway 100, Suite 500 St. Louis Park, MN 55416, USA.

Email: [info@bioworld.com](mailto:info@bioworld.com)

Tel: 6123263284

Fax: 6122933841

### Bioworld technology, co. Ltd.

Add: No 9, weidi road Qixia District Nanjing, 210046, P. R. China.

Email: [info@biogot.com](mailto:info@biogot.com)

Tel: 0086-025-68037686

Fax: 0086-025-68035151