

ARHGAP20 polyclonal antibody

Catalog: BS60766

Host: Rabbit

Reactivity: Human,Rat

BackGround:

GTPase-activating proteins (GAPs) accelerate the intrinsic rate of GTP hydrolysis of Ras-related proteins. ARHGAP20 (Rho GTPase activating protein 20), also known as KIAA1391, is a 1,191 amino acid protein that contains one PH domain, one Ras-associating domain and one Rho-GAP domain. Expressed primarily in brain, but also present in lymph nodes and fetal liver, ARHGAP20 functions as a GTPase-activating protein for Rho-type GTPases, effectively converting Rho-type GTPases to an inactive, GDP-bound state. ARHGAP20 exists as multiple isoforms that are produced via alternative splicing. Chromosomal aberrations involving the ARHGAP20 gene are thought to be a cause of B-cell chronic lymphocytic leukemia (B-CLL).

Product:

Rabbit IgG, 1mg/ml in PBS with 0.02% sodium azide, 50% glycerol, pH7.2

Molecular Weight:

~ 133 kDa

Swiss-Prot:

Q9P2F6

Purification&Purity:

The antibody was affinity-purified from rabbit antiserum by affinity-chromatography using epitope-specific immunogen and the purity is > 95% (by SDS-PAGE).

Applications:

WB: 1:500~1:1000

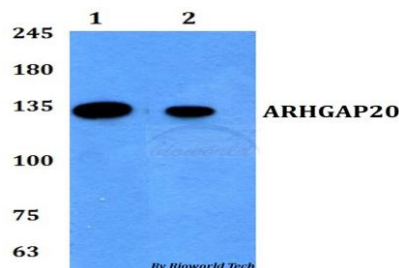
Storage&Stability:

Store at 4 °C short term. Aliquot and store at -20 °C long term. Avoid freeze-thaw cycles.

Specificity:

ARHGAP20 polyclonal antibody detects endogenous levels of ARHGAP20 protein.

DATA:



Western blot (WB) analysis of ARHGAP20 polyclonal antibody at 1:500 dilution

Lane1:A549 whole cell lysate

Lane2:PC12 whole cell lysate

Note:

For research use only, not for use in diagnostic procedure.

Bioworld Technology, Inc.

Add: 1660 South Highway 100, Suite 500 St. Louis Park, MN 55416, USA.

Email: info@bioworld.com

Tel: 6123263284

Fax: 6122933841

Bioworld technology, co. Ltd.

Add: No 9, weidi road Qixia District Nanjing, 210046, P. R. China.

Email: info@biogot.com

Tel: 0086-025-68037686

Fax: 0086-025-68035151