

NID2 polyclonal antibody

Catalog: BS60776

Host: Rabbit

Reactivity: Human, Mouse, Rat

BackGround:

Nidogens are highly conserved proteins present in vertebrate and invertebrate basement membranes. Nidogens connect the Laminin and Collagen IV networks and integrate other proteins into the membrane. In mammals, two Nidogen proteins, Nidogen and Nidogen-2, interact at comparable levels with Collagen I, IV and Perlecan, serving to stabilize basement membranes and playing a major role in embryogenesis. The two isoforms have a similar shape, consisting of three globular domains, and co-localize in vessel walls and other basement membrane zones. Nidogen-2 is a cell adhesion protein glycosylated at nitrogen and oxygen sites, and is widely distributed in basement membranes in heart, placenta, bone and, to a lesser extent, in pancreas, kidney and skeletal muscle.

Product:

Rabbit IgG, 1mg/ml in PBS with 0.02% sodium azide, 50% glycerol, pH7.2

Molecular Weight:

~ 151 kDa

Swiss-Prot:

Q14112

Purification&Purity:

The antibody was affinity-purified from rabbit antiserum by affinity-chromatography using epitope-specific immunogen and the purity is > 95% (by SDS-PAGE).

Applications:

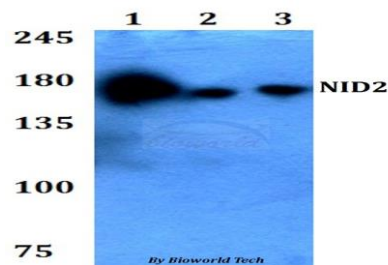
WB: 1:500~1:1000

Storage&Stability:

Store at 4 °C short term. Aliquot and store at -20 °C long term. Avoid freeze-thaw cycles.

Specificity:

NID2 polyclonal antibody detects endogenous levels of NID2 protein.

DATA:

Western blot (WB) analysis of NID2 polyclonal antibody at 1:500 dilution

Lane1:HEK293T whole cell lysate

Lane2:Raw264.7 whole cell lysate

Lane3:PC12 whole cell lysate

Note:

For research use only, not for use in diagnostic procedure.

Bioworld Technology, Inc.

Add: 1660 South Highway 100, Suite 500 St. Louis Park, MN 55416, USA.

Email: info@bioworld.com

Tel: 6123263284

Fax: 6122933841

Bioworld technology, co. Ltd.

Add: No 9, weidi road Qixia District Nanjing, 210046, P. R. China.

Email: info@biogot.com

Tel: 0086-025-68037686

Fax: 0086-025-68035151