

## CPD polyclonal antibody

Catalog: BS60812

Host: Rabbit

Reactivity: Human

### BackGround:

Members of the M14 metalloproteinase family serve many diverse functions and are divided into three subfamilies based on structure, function and amino acid sequence similarity. CPD (carboxypeptidase D), also known as GP180 or metalloproteinase D, is a 1,380 amino acid single-pass type I membrane protein that belongs to the peptidase M14 family. CPD binds two zinc ions per subunit and contains three carboxypeptidase-like domains. CPD causes the release of C-terminal arginine and lysine from polypeptides. Highest expression of CPD is found in pancreas, hepatoma cells and placenta, with lower levels in heart, skeletal muscle and colon carcinoma. Mammalian CPD is a homolog of the duck hepatitis B virus-binding protein gp180.

### Product:

Rabbit IgG, 1mg/ml in PBS with 0.02% sodium azide, 50% glycerol, pH7.2

### Molecular Weight:

~ 200 kDa

### Swiss-Prot:

O75976

### Purification&Purity:

The antibody was affinity-purified from rabbit antiserum by affinity-chromatography using epitope-specific im-

munogen and the purity is > 95% (by SDS-PAGE).

### Applications:

WB: 1:500~1:1000

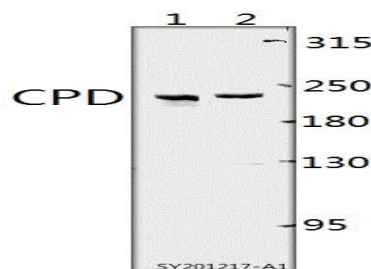
### Storage&Stability:

Store at 4 °C short term. Aliquot and store at -20 °C long term. Avoid freeze-thaw cycles.

### Specificity:

CABIN1 polyclonal antibody detects endogenous levels of CABIN1 protein.

### DATA:



Western blot (WB) analysis of CPD pAb at 1:500 dilution

Lane1:U-87MG whole cell lysate(40ug)

Lane2:SGC7901 whole cell lysate(40ug)

### Note:

For research use only, not for use in diagnostic procedure.

### Bioworld Technology, Inc.

Add: 1660 South Highway 100, Suite 500 St. Louis Park, MN 55416, USA.

Email: [info@bioworld.com](mailto:info@bioworld.com)

Tel: 6123263284

Fax: 6122933841

### Bioworld technology, co. Ltd.

Add: No 9, weidi road Qixia District Nanjing, 210046, P. R. China.

Email: [info@biogot.com](mailto:info@biogot.com)

Tel: 0086-025-68037686

Fax: 0086-025-68035151