

MPO polyclonal antibody

Catalog: BS60841

Host: Rabbit

Reactivity: Human, Mouse

BackGround:

The heme protein myeloperoxidase (MPO) is a major component of azurophilic granules of neutrophils and polymorphonuclear leukocytes. Optimal oxygen-dependent microbiocidal activity depends on MPO as the critical enzyme for the generation of hypochlorous acid and other toxic oxygen products. The MPO precursor is synthesized during the promyelocytic stage of myeloid differentiation and is subsequently processed and transported intracellularly to the lysosomes. The precursor undergoes cotranslational N-linked glycosylation to produce a glycoprotein. Glucosidases in the endoplasmic reticulum (ER) or early cis Golgi convert the pro-MPO to a form which is sorted into a prelysosomal compartment, which undergoes final proteolytic maturation to native MPO, a pair of heavy-light protomers. In normal neutrophils, MPO is expressed as a dimer. Calreticulin, a calcium-binding protein residing in the ER, interacts specifically with fully glycosylated apopro-MPO. iMPO mRNA is abundant in human promyelocytic HL-60 and mouse myeloid leukemia NFS-60 cells. MPO is expressed at high levels in circulating neutrophils and monocytes but is not detectable in microglia, brain-specific macrophages or normal brain tissue.

Product:

Rabbit IgG, 1mg/ml in PBS with 0.02% sodium azide, 50% glycerol, pH7.2

Molecular Weight:

~ 74 kDa

Swiss-Prot:

P05164

Purification&Purity:

The antibody was affinity-purified from rabbit antiserum by affinity-chromatography using epitope-specific immunogen and the purity is > 95% (by SDS-PAGE).

Applications:

WB: 1:500~1:1000

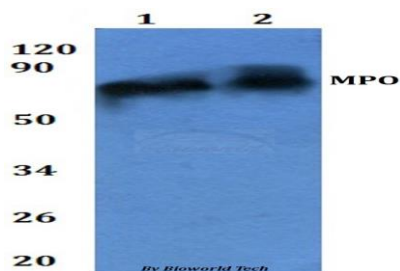
Storage&Stability:

Store at 4 °C short term. Aliquot and store at -20 °C long term. Avoid freeze-thaw cycles.

Specificity:

MPO polyclonal antibody detects endogenous levels of MPO protein.

DATA:



Western blot (WB) analysis of MPO polyclonal antibody at 1:500 dilution
Lane1:HEK293T whole cell lysate
Lane2:RAW264.7 whole cell lysate

Note:

For research use only, not for use in diagnostic procedure.

Bioworld Technology, Inc.

Add: 1660 South Highway 100, Suite 500 St. Louis Park, MN 55416, USA.

Email: info@bioworld.com

Tel: 6123263284

Fax: 6122933841

Bioworld technology, co. Ltd.

Add: No 9, weidi road Qixia District Nanjing, 210046, P. R. China.

Email: info@biogot.com

Tel: 0086-025-68037686

Fax: 0086-025-68035151