

DBI polyclonal antibody

Catalog: BS60861

Host: Rabbit

Reactivity: Human, Mouse, Rat

BackGround:

Long chain acyl-CoA esters (LCAs) act as both substrates and intermediates in metabolism, and as regulators of various intracellular functions. Acyl-CoA binding protein (ACBP) specifically binds to LCA with high affinity and regulates its availability. ACBP is structurally and functionally conserved among a diverse group of organisms, including human, rat, frog, insect, plant and yeast. DBI, the gene encoding human ACBP, which maps to chromosome 2, is highly expressed in liver, soleus muscle and heart. The ACBP protein is also abundant in cells with a high level of lipogenesis and de novo fatty acid synthesis. Expression of ACBP is significantly induced during adipocyte differentiation. DBI is a target gene for proliferator-activated receptor (PPAR) γ , and is directly activated by PPAR γ /RXR α ; and PPAR α /RXR α ;, but not by PPAR δ /RXR α ;. In addition to acyl-CoA binding and transport, ACBP is also implicated in γ -aminobutyric acid type A receptor binding, steroidogenesis and peptide hormone release.

Product:

Rabbit IgG, 1mg/ml in PBS with 0.02% sodium azide, 50% glycerol, pH7.2

Molecular Weight:

~ 10 kDa

Swiss-Prot:

P07108

Purification&Purity:

The antibody was affinity-purified from rabbit antiserum by affinity-chromatography using epitope-specific immunogen and the purity is > 95% (by SDS-PAGE).

Applications:

WB: 1:500~1:1000

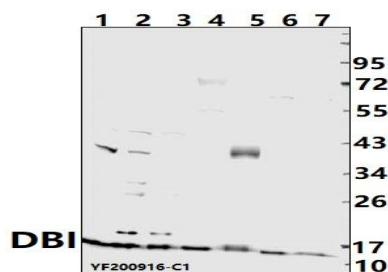
Storage&Stability:

Store at 4 °C short term. Aliquot and store at -20 °C long term. Avoid freeze-thaw cycles.

Specificity:

DBI polyclonal antibody detects endogenous levels of DBI protein.

DATA:



Western blot (WB) analysis of DBI pAb at 1:1000 dilution

Lane1:PC12 whole cell lysate(40ug)

Lane2:CT-26 whole cell lysate(40ug)

Lane3:THP-1 whole cell lysate(40ug)

Lane4:The liver tissue lysate of Mouse(40ug)

Lane5:The heart tissue lysate of Rat(40ug)

Lane6:MCF-7 whole cell lysate(40ug)

Lane7:HepG2 whole cell lysate(40ug)

Note:

For research use only, not for use in diagnostic procedure.

Bioworld Technology, Inc.

Add: 1660 South Highway 100, Suite 500 St. Louis Park, MN 55416, USA.

Email: info@bioworld.com

Tel: 6123263284

Fax: 6122933841

Bioworld technology, co. Ltd.

Add: No 9, weidi road Qixia District Nanjing, 210046, P. R. China.

Email: info@biogot.com

Tel: 0086-025-68037686

Fax: 0086-025-68035151