

## GREM2 polyclonal antibody

Catalog: BS60971

Host: Rabbit

Reactivity: Human, Mouse, Rat

### BackGround:

The gremlin protein family contains antagonists of bone morphogenetic protein (BMP) signaling that are expressed in the neural crest. All family members are secreted proteins that act as BMP antagonists in embryonic explants and are expressed in the proximal airway epithelium of the lung during embryonic development. Gremlin-1 is required for early limb outgrowth and patterning in the FGF4-SHH feedback loop, while gremlin-2 binds and blocks the activity of BMP-2 and BMP-4. The dorsalizing factor gremlin belongs to a novel gene family that includes the head-inducing factor Cerberus and the tumor suppressor DAN. Additionally, secreted gremlin relays the sonic hedgehog signal from the polarizing region to the apical ectodermal ridge.

### Product:

Rabbit IgG, 1mg/ml in PBS with 0.02% sodium azide, 50% glycerol, pH7.2

### Molecular Weight:

~ 19 kDa

### Swiss-Prot:

Q9H772

### Purification&Purity:

The antibody was affinity-purified from rabbit antiserum by affinity-chromatography using epitope-specific immunogen and the purity is > 95% (by SDS-PAGE).

### Applications:

WB: 1:500~1:1000

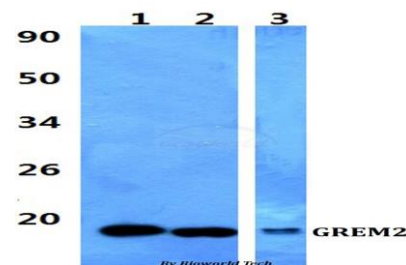
### Storage&Stability:

Store at 4 °C short term. Aliquot and store at -20 °C long term. Avoid freeze-thaw cycles.

### Specificity:

GREM2 polyclonal antibody detects endogenous levels of GREM2 protein.

### DATA:



Western blot (WB) analysis of GREM2 polyclonal antibody at 1:500 dilution

Lane1:HEK293T whole cell lysate

Lane2:Raw264.7 whole cell lysate

Lane3:H9C2 whole cell lysate

### Note:

For research use only, not for use in diagnostic procedure.

### Bioworld Technology, Inc.

Add: 1660 South Highway 100, Suite 500 St. Louis Park, MN 55416, USA.

Email: [info@bioworld.com](mailto:info@bioworld.com)

Tel: 6123263284

Fax: 6122933841

### Bioworld technology, co. Ltd.

Add: No 9, weidi road Qixia District Nanjing, 210046, P. R. China.

Email: [info@biogot.com](mailto:info@biogot.com)

Tel: 0086-025-68037686

Fax: 0086-025-68035151