

## XCL1/2 polyclonal antibody

Catalog: BS60985

Host: Rabbit

Reactivity: Human, Mouse, Rat

### Background:

Lymphotactin is a chemokine-like molecule produced selectively, if not exclusively, by activated CD8+ T cells. Lymphotactin is a C-type member of the chemokine superfamily, but retains only the 2nd and 4th of the four cysteine residues conserved in other chemokines. In normal tissues, lymphotactin is expressed at high levels in spleen, thymus, small intestine, and peripheral blood leukocytes, as well as at low levels in lung, prostate, and ovary. Lymphotactin is chemotactic for CD4+ and CD8+ T cells but not for monocytes, and induces a rise in intracellular calcium in peripheral blood lymphocytes. The specific receptor for lymphotactin is XCR1, a member of the G protein-coupled receptor family. The gene which encodes lymphotactin maps to human chromosome 1q23.

### Product:

Rabbit IgG, 1mg/ml in PBS with 0.02% sodium azide, 50% glycerol, pH7.2

### Molecular Weight:

~ 13 kDa

### Swiss-Prot:

P47992/Q9UBD3

### Purification&Purity:

The antibody was affinity-purified from rabbit antiserum by affinity-chromatography using epitope-specific im-

munogen and the purity is > 95% (by SDS-PAGE).

### Applications:

WB: 1:500~1:1000

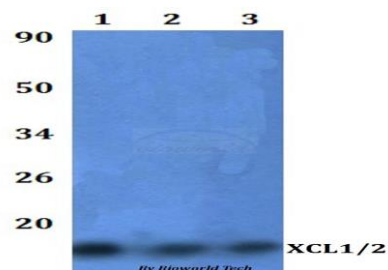
### Storage&Stability:

Store at 4 °C short term. Aliquot and store at -20 °C long term. Avoid freeze-thaw cycles.

### Specificity:

XCL1/2 polyclonal antibody detects endogenous levels of XCL1/2 protein.

### DATA:



Western blot (WB) analysis of XCL1/2 polyclonal antibody at 1:500 dilution Lane1:HEK293T whole cell lysate

Lane2:RAW264.7 whole cell lysate Lane3:H9C2 whole cell lysate

### Note:

For research use only, not for use in diagnostic procedure.

### Bioworld Technology, Inc.

Add: 1660 South Highway 100, Suite 500 St. Louis Park, MN 55416, USA.

Email: [info@bioworld.com](mailto:info@bioworld.com)

Tel: 6123263284

Fax: 6122933841

### Bioworld technology, co. Ltd.

Add: No 9, weidi road Qixia District Nanjing, 210046, P. R. China.

Email: [info@biogot.com](mailto:info@biogot.com)

Tel: 0086-025-68037686

Fax: 0086-025-68035151