

## IRX3 polyclonal antibody

Catalog: BS61032

Host: Rabbit

Reactivity: Human, Mouse, Rat

### BackGround:

The Iroquois homeobox gene family of transcription factors regulate aspects of embryonic development including anterior/posterior and dorsal/ventral axis patterning in the central nervous system. The Iroquois family are clustered on two loci, IRXA and IRXB, which map to chromosomes 8 and 13 in mice. The IRXA group includes IRX, IRX2 and IRX4; the IRXB group comprises IRX3, IRX5 and IRX6. IRX1 and IRX2 are both widely expressed during development in the lung epithelium and also in the ventricular septum. IRX1 and IRX2 also play a role in digit formation (E11.5–E14.5). The IRX gene family members are each expressed in a distinct pattern during mouse heart development. Specifically, IRX1 and IRX2 are expressed in the ventricular septum and IRX3 is expressed in the ventricular trabeculated myocardium. In addition, IRX4 is expressed in the linear heart tube and the AV canal; IRX5 is expressed in the endocardium lining the ventricular and atrial myocardium. Furthermore, the IRX4 gene may modulate cardiac development and function. Although the heart of IRX4(-) mice appears to develop normally, adult IRX4(-) mice exhibit cardiomyopathy, including cardiac hypertrophy and decreased contractility.

### Product:

Rabbit IgG, 1mg/ml in PBS with 0.02% sodium azide, 50% glycerol, pH7.2

### Molecular Weight:

~ 52 kDa

### Swiss-Prot:

P78415

### Purification&Purity:

The antibody was affinity-purified from rabbit antiserum by affinity-chromatography using epitope-specific immunogen and the purity is > 95% (by SDS-PAGE).

### Applications:

WB: 1:500~1:1000

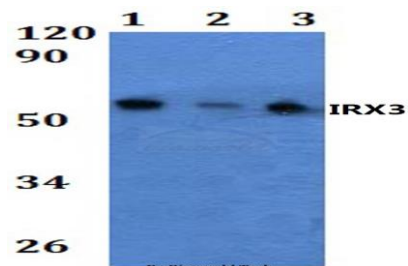
### Storage&Stability:

Store at 4 °C short term. Aliquot and store at -20 °C long term. Avoid freeze-thaw cycles.

### Specificity:

IRX3 polyclonal antibody detects endogenous levels of IRX3 protein.

### DATA:



Western blot (WB) analysis of IRX3 polyclonal antibody at 1:500 dilution

Lane1:RAW264.7 whole cell lysate      Lane2:PC12 whole cell lysate

Lane3:HELA whole cell lysate

### Note:

For research use only, not for use in diagnostic procedure.

### Bioworld Technology, Inc.

Add: 1660 South Highway 100, Suite 500 St. Louis Park, MN 55416, USA.

Email: [info@bioworld.com](mailto:info@bioworld.com)

Tel: 6123263284

Fax: 6122933841

### Bioworld technology, co. Ltd.

Add: No 9, weidi road Qixia District Nanjing, 210046, P. R. China.

Email: [info@biogot.com](mailto:info@biogot.com)

Tel: 0086-025-68037686

Fax: 0086-025-68035151