

PLXDC1 polyclonal antibody

Catalog: BS61057

Host: Rabbit

Reactivity: Human, Mouse, Rat

BackGround:

Tumor endothelial markers (TEMs) are abundantly expressed in the blood vessels of human solid tumors during angiogenesis and neoangiogenesis. These include TEM1 (endosialin), TEM5 (G-protein coupled receptor 124) and TEM7 (plexin domain containing 1). TEMs are associated with the cell surface membrane at low levels in normal human and mouse tissues. TEM5 is a seven-pass trans-membrane receptor, whereas TEM1, TEM7 and TEM8 span the membrane once. TEM5 expression is elevated during tumor angiogenesis and neoangiogenesis. TEM7 is highly expressed in tumor endothelium and neurons. Therefore, TEM5 and TEM7 may be suitable targets for the development of antiangiogenic therapies.

Product:

Rabbit IgG, 1mg/ml in PBS with 0.02% sodium azide, 50% glycerol, pH7.2

Molecular Weight:

~ 56 kDa

Swiss-Prot:

Q8IUU5

Purification&Purity:

The antibody was affinity-purified from rabbit antiserum by affinity-chromatography using epitope-specific immunogen and the purity is > 95% (by SDS-PAGE).

Applications:

WB: 1:500~1:1000

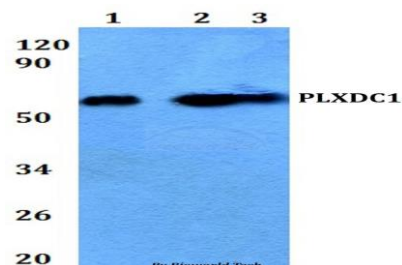
Storage&Stability:

Store at 4 °C short term. Aliquot and store at -20 °C long term. Avoid freeze-thaw cycles.

Specificity:

PLXDC1 polyclonal antibody detects endogenous levels of PLXDC1 protein.

DATA:



Western blot (WB) analysis of PLXDC1 polyclonal antibody at 1:500 dilution Lane1:HEK293T whole cell lysate

Lane2:RAW264.7 whole cell lysate Lane3:H9C2 whole cell lysate

Note:

For research use only, not for use in diagnostic procedure.

Bioworld Technology, Inc.

Add: 1660 South Highway 100, Suite 500 St. Louis Park, MN 55416, USA.

Email: info@bioworld.com

Tel: 6123263284

Fax: 6122933841

Bioworld technology, co. Ltd.

Add: No 9, weidi road Qixia District Nanjing, 210046, P. R. China.

Email: info@biogot.com

Tel: 0086-025-68037686

Fax: 0086-025-68035151