

## MED12 polyclonal antibody

Catalog: BS61060

Host: Rabbit

Reactivity: Human, Mouse, Rat

### Background:

In mammalian cells, transcription is regulated in part by high molecular weight coactivating complexes that mediate signaling between transcriptional activators and initiation factors. These complexes include the thyroid hormone receptor-associated protein (TRAP) complex, which interacts with thyroid receptors (TR), vitamin D receptors and other steroid receptors to facilitate hormone induced transcriptional activation. The TRAP complex consists of numerous proteins ranging in size including TRAP95, TRAP100, TRAP150, TRAP220 and TRAP230, that are characterized by the presence of a nuclear receptor recognition motif which mediates the ligand-dependent binding of TRAP proteins to the nuclear receptors. TRAP220 and TRAP100 are widely expressed and most abundantly detected in skeletal muscle, heart and placenta. TRAP95, TRAP150 and TRAP230 facilitate TR induced transcription by associating with an additional transcriptional coactivating complex SMCC (SRB and MED protein cofactor complex), which consists of various subunits that share homology with several components of the yeast transcriptional mediator complexes.

### Product:

Rabbit IgG, 1mg/ml in PBS with 0.02% sodium azide, 50% glycerol, pH7.2

### Molecular Weight:

~ 243 kDa

### Swiss-Prot:

Q93074

### Purification&Purity:

The antibody was affinity-purified from rabbit antiserum

by affinity-chromatography using epitope-specific immunogen and the purity is > 95% (by SDS-PAGE).

### Applications:

WB: 1:500~1:1000

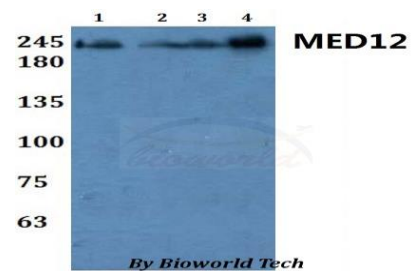
### Storage&Stability:

Store at 4 °C short term. Aliquot and store at -20 °C long term. Avoid freeze-thaw cycles.

### Specificity:

MED12 polyclonal antibody detects endogenous levels of MED12 protein.

### DATA:



Western blot (WB) analysis of MED12 polyclonal antibody at 1:500 dilution

Lane1:HEK293T whole cell lysate

Lane2:H9C2 whole cell lysate

Lane3:sp20 whole cell lysate

Lane4:PC12 whole cell lysate

### Note:

For research use only, not for use in diagnostic procedure.

### Bioworld Technology, Inc.

Add: 1660 South Highway 100, Suite 500 St. Louis Park, MN 55416, USA.

Email: [info@bioworld.com](mailto:info@bioworld.com)

Tel: 6123263284

Fax: 6122933841

### Bioworld technology, co. Ltd.

Add: No 9, weidi road Qixia District Nanjing, 210046, P. R. China.

Email: [info@biogot.com](mailto:info@biogot.com)

Tel: 0086-025-68037686

Fax: 0086-025-68035151