

PARP3 polyclonal antibody

Catalog: BS61101

Host: Rabbit

Reactivity: Human, Mouse, Rat

Background:

Poly(ADP-ribose) polymerase-3 (PARP-3) is part of the base excision repair (BER) pathway, catalyzing the poly(ADP-ribosylation) of nuclear proteins. Poly(ADP-ribosylation), a post-translational modification following DNA damage, appears as an obligatory step in a detection/signaling pathway leading to the reparation of DNA strand breaks. PARP-3 is a nuclear, DNA-binding protein, which interacts with PARP-1. PARP-3 is present in actively dividing tissues with highest levels in the kidney, skeletal muscle, liver, heart and spleen. Human PARP-3 maps to chromosome 3p21-3-p21.1, a gene region that undergoes alteration in solid malignant tumors.

Product:

Rabbit IgG, 1mg/ml in PBS with 0.02% sodium azide, 50% glycerol, pH7.2

Molecular Weight:

~ 60 kDa

Swiss-Prot:

Q9Y6F1

Purification&Purity:

The antibody was affinity-purified from rabbit antiserum by affinity-chromatography using epitope-specific immunogen and the purity is > 95% (by SDS-PAGE).

Applications:

WB: 1:500~1:1000

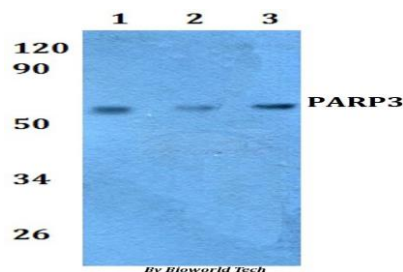
Storage&Stability:

Store at 4 °C short term. Aliquot and store at -20 °C long term. Avoid freeze-thaw cycles.

Specificity:

PARP3 polyclonal antibody detects endogenous levels of PARP3 protein.

DATA:



Western blot (WB) analysis of PARP3 polyclonal antibody at 1:500 dilution Lane1:HEK293T whole cell lysate
Lane2:RAW264.7 whole cell lysate Lane3:H9C2 whole cell lysate

Note:

For research use only, not for use in diagnostic procedure.

Bioworld Technology, Inc.

Add: 1660 South Highway 100, Suite 500 St. Louis Park, MN 55416, USA.

Email: info@bioworld.com

Tel: 6123263284

Fax: 6122933841

Bioworld technology, co. Ltd.

Add: No 9, weidi road Qixia District Nanjing, 210046, P. R. China.

Email: info@biogot.com

Tel: 0086-025-68037686

Fax: 0086-025-68035151