

MRPS18A polyclonal antibody

Catalog: BS61104

Host: Rabbit

Reactivity: Human, Mouse, Rat

BackGround:

Mitochondrial ribosomes consist of a large 39S subunit and a small 28S subunit, both of which are comprised of multiple mitochondrial ribosomal proteins (MRPs) that are encoded by nuclear genes and are essential for protein synthesis within mitochondria. MRP-S18A (mitochondrial ribosomal protein S18A), also known as MRPS18-3, is a 196 amino acid protein that localizes to the mitochondrion, where it exists as a component of the 28S ribosomal subunit and works in conjunction with other MRPs to mediate protein synthesis. MRP-S18A is a member of the ribosomal protein S18P family, which also includes MRP-S18B and MRP-S18C. The gene encoding MRP-S18A maps to human chromosome 6, which contains 170 million base pairs and comprises nearly 6% of the human genome.

Product:

1 mg/ml in Phosphate buffered saline (PBS) with 0.05% sodium azide, approx. pH 7.3.

Molecular Weight:

~ 22 kDa

Swiss-Prot:

Q9NVS2

Purification&Purity:

The antibody was affinity-purified from rabbit antiserum by affinity-chromatography using epitope-specific im-

munogen and the purity is > 95% (by SDS-PAGE).

Applications:

WB: 1:500~1:1000

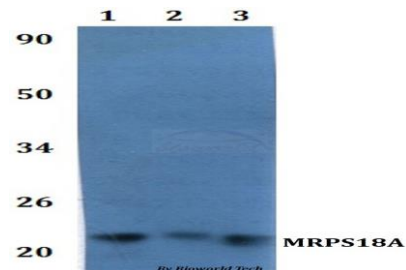
Storage&Stability:

Store at 4 °C short term. Aliquot and store at -20 °C long term. Avoid freeze-thaw cycles.

Specificity:

MRPS18A polyclonal antibody detects endogenous levels of MRPS18A protein.

DATA:



Western blot (WB) analysis of MRPS18A polyclonal antibody at 1:500 dilution Lane1:HEK293T whole cell lysate

Lane2:RAW264.7 whole cell lysate Lane3:H9C2 whole cell lysate

Note:

For research use only, not for use in diagnostic procedure.

Bioworld Technology, Inc.

Add: 1660 South Highway 100, Suite 500 St. Louis Park, MN 55416, USA.

Email: info@bioworld.com

Tel: 6123263284

Fax: 6122933841

Bioworld technology, co. Ltd.

Add: No 9, weidi road Qixia District Nanjing, 210046, P. R. China.

Email: info@biogot.com

Tel: 0086-025-68037686

Fax: 0086-025-68035151