

CPXM2 polyclonal antibody

Catalog: BS61150

Host: Rabbit

Reactivity: Human, Mouse, Rat

Background:

Members of the M14 metallocarboxypeptidase protein family serve many diverse functions and are divided into three subfamilies based on structure, function and amino acid sequence similarity. Belonging to the N/E subfamily, CPXM2 (Inactive carboxypeptidase-like protein X2) is a 756 amino acid protein that contains a F5/8 type C domain and is secreted. Most members of the N/E subfamily contain several domains, including an active carboxypeptidase domain and signal peptide and are thought to function mostly in mediating protein-protein interactions and/or protein-membrane interactions, thereby targeting the protein to specific locations within the secretory pathway. CPXM2 is a unique member of this subfamily in that it does not appear to exhibit any enzymatic activity due to lack of several active-site residues that are present in the catalytic domain of other members of the N/E subfamily. Expression of the closely related protein CPXM is regulated during osteoclastogenesis, suggesting that CPXM may play a role in osteoclast differentiation.

Product:

Rabbit IgG, 1mg/ml in PBS with 0.02% sodium azide, 50% glycerol, pH7.2

Molecular Weight:

~ 86 kDa

Swiss-Prot:

Q8N436

Purification&Purity:

The antibody was affinity-purified from rabbit antiserum

by affinity-chromatography using epitope-specific immunogen and the purity is > 95% (by SDS-PAGE).

Applications:

WB: 1:500~1:1000

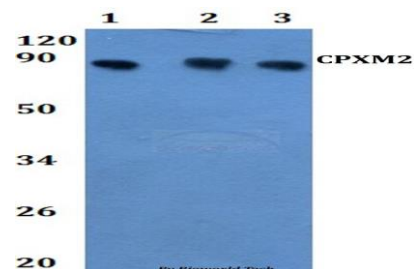
Storage&Stability:

Store at 4 °C short term. Aliquot and store at -20 °C long term. Avoid freeze-thaw cycles.

Specificity:

CPXM2 polyclonal antibody detects endogenous levels of CPXM2 protein.

DATA:



Western blot (WB) analysis of CA8 polyclonal antibody at 1:500

Line1:Mcf-7 whole cell lysate

Line2:H9C2 whole cell lysate

Line3:sp20 whole cell lysate

Note:

For research use only, not for use in diagnostic procedure.

Bioworld Technology, Inc.

Add: 1660 South Highway 100, Suite 500 St. Louis Park, MN 55416, USA.

Email: info@bioworld.com

Tel: 6123263284

Fax: 6122933841

Bioworld technology, co. Ltd.

Add: No 9, weidi road Qixia District Nanjing, 210046, P. R. China.

Email: info@biogot.com

Tel: 0086-025-68037686

Fax: 0086-025-68035151