

POLG2 polyclonal antibody

Catalog: BS61176

Host: Rabbit

Reactivity: Human, Mouse, Rat

BackGround:

DNA replication, recombination and repair, all of which are necessary for genomic stability, require the presence of exonucleases. In DNA replication, these enzymes are involved in the processing of Okazaki fragments, whereas in DNA repair, they function to excise damaged DNA fragments and correct recombinational mismatches. These exonucleases include the family of DNA polymerases. DNA pol γ 2 (polymerase (DNA directed), gamma 2, accessory subunit), also known as mitochondrial DNA polymerase accessory subunit, POLB, HP55, PEOA4, POLGB, MTPOLB, POLG-BETA or POLG2, is a 485 amino acid subunit of mitochondrial DNA pol γ . DNA pol γ 2 enhances DNA binding and promotes processive DNA synthesis. Defects in the gene encoding DNA pol γ 2 are the cause of PEOA4 (progressive external ophthalmoplegia with mitochondrial DNA deletions autosomal dominant type 4).

Product:

Rabbit IgG, 1mg/ml in PBS with 0.02% sodium azide, 50% glycerol, pH7.2

Molecular Weight:

~ 55 kDa

Swiss-Prot:

Q9UHN1

Purification&Purity:

The antibody was affinity-purified from rabbit antiserum by affinity-chromatography using epitope-specific immunogen and the purity is > 95% (by SDS-PAGE).

Applications:

WB: 1:500~1:1000

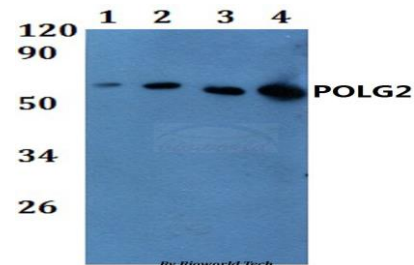
Storage&Stability:

Store at 4 °C short term. Aliquot and store at -20 °C long term. Avoid freeze-thaw cycles.

Specificity:

POLG2 polyclonal antibody detects endogenous levels of POLG2 protein.

DATA:



Western blot (WB) analysis of POLG2 polyclonal antibody at 1:500 dilution

Lane1:A549 whole cell lysate

Lane2:Hela whole cell lysate

Lane3:H9C2 whole cell lysate

Lane4:SP20 whole cell lysate

Note:

For research use only, not for use in diagnostic procedure.

Bioworld Technology, Inc.

Add: 1660 South Highway 100, Suite 500 St. Louis Park, MN 55416, USA.

Email: info@bioworld.com

Tel: 6123263284

Fax: 6122933841

Bioworld technology, co. Ltd.

Add: No 9, weidi road Qixia District Nanjing, 210046, P. R. China.

Email: info@biogot.com

Tel: 0086-025-68037686

Fax: 0086-025-68035151