

POTEA polyclonal antibody

Catalog: BS61241

Host: Rabbit

Reactivity: Human, Mouse, Rat

BackGround:

POTE8 (Prostate, ovary, testis-expressed protein on chromosome 8), also known as A26A1 (ANKRD26-like family A member 1) or POTEA (POTE ankyrin domain family, member A), is a 498 amino acid protein that contains five ANK repeats and is thought to participate in signaling events during reproductive development. POTE8 exists as two alternatively spliced isoforms which are encoded by a gene that maps to human chromosome 8. Consisting of nearly 146 million base pairs, chromosome 8 encodes over 800 genes and is associated with a variety of diseases and malignancies. Schizophrenia, bipolar disorder, Trisomy 8, Pfeiffer syndrome, congenital hypothyroidism, Waardenburg syndrome and some leukemias and lymphomas are thought to occur as a result of defects in specific genes that maps to chromosome 8.

Product:

Rabbit IgG, 1mg/ml in PBS with 0.02% sodium azide, 50% glycerol, pH7.2

Molecular Weight:

~ 51 kDa

Swiss-Prot:

Q6S8J7

Purification&Purity:

The antibody was affinity-purified from rabbit antiserum by affinity-chromatography using epitope-specific im-

munogen and the purity is > 95% (by SDS-PAGE).

Applications:

WB: 1:500~1:1000

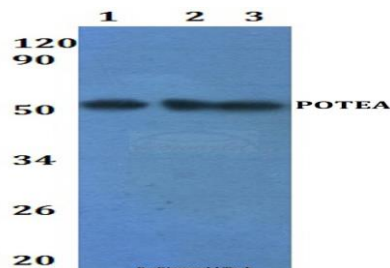
Storage&Stability:

Store at 4 °C short term. Aliquot and store at -20 °C long term. Avoid freeze-thaw cycles.

Specificity:

POTEA polyclonal antibody detects endogenous levels of POTEA protein.

DATA:



Western blot (WB) analysis of POTEA polyclonal antibody at 1:500 dilution Lane1:HEK293T whole cell lysate

Lane2:RAW264.7 whole cell lysate Lane3:H9C2 whole cell lysate

Note:

For research use only, not for use in diagnostic procedure.

Bioworld Technology, Inc.

Add: 1660 South Highway 100, Suite 500 St. Louis Park, MN 55416, USA.

Email: info@bioworld.com

Tel: 6123263284

Fax: 6122933841

Bioworld technology, co. Ltd.

Add: No 9, weidi road Qixia District Nanjing, 210046, P. R. China.

Email: info@biogot.com

Tel: 0086-025-68037686

Fax: 0086-025-68035151