

SPINK6 polyclonal antibody

Catalog: BS61262

Host: Rabbit

Reactivity: Human, Mouse, Rat

BackGround:

SPINK6 (serine peptidase inhibitor, Kazal type 6), also known as BUSI2, is an 80 amino acid secreted protein that contains one kazal-like domain and is thought to function as a serine protease inhibitor. The gene encoding SPINK6 maps to human chromosome 5, which contains 181 million base pairs and comprises nearly 6% of the human genome. Chromosome 5 is associated with Cockayne syndrome through the ERCC8 gene and familial adenomatous polyposis through the adenomatous polyposis coli (APC) tumor suppressor gene. Treacher Collins syndrome is also associated with chromosome 5 and is caused by insertions or deletions within the TCOF1 gene. Deletion of the p arm of chromosome 5 leads to Cri du chat syndrome, while deletion of the q arm or of chromosome 5 altogether is common in therapy-related acute myelogenous leukemias and myelodysplastic syndrome.

Product:

Rabbit IgG, 1mg/ml in PBS with 0.02% sodium azide, 50% glycerol, pH7.2

Molecular Weight:

~ 8 kDa

Swiss-Prot:

Q6UWN8

Purification&Purity:

The antibody was affinity-purified from rabbit antiserum by affinity-chromatography using epitope-specific immunogen and the purity is > 95% (by SDS-PAGE).

Applications:

WB: 1:500~1:1000

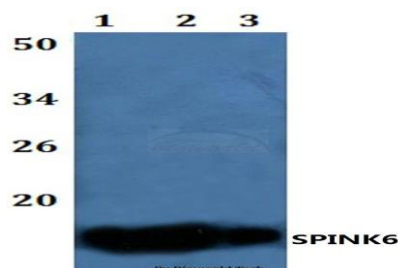
Storage&Stability:

Store at 4 °C short term. Aliquot and store at -20 °C long term. Avoid freeze-thaw cycles.

Specificity:

SPINK6 polyclonal antibody detects endogenous levels of SPINK6 protein.

DATA:



Western blot (WB) analysis of SPINK6 polyclonal antibody at 1:500 dilution

Lane1:Raw264.7 whole cell lysate

Lane2:H9C2 whole cell lysate

Lane3:HELA whole cell lysate

Note:

For research use only, not for use in diagnostic procedure.

Bioworld Technology, Inc.

Add: 1660 South Highway 100, Suite 500 St. Louis Park, MN 55416, USA.

Email: info@bioworld.com

Tel: 6123263284

Fax: 6122933841

Bioworld technology, co. Ltd.

Add: No 9, weidi road Qixia District Nanjing, 210046, P. R. China.

Email: info@biogot.com

Tel: 0086-025-68037686

Fax: 0086-025-68035151